

Lima-Allen County Regional Planning Commission

2021 Annual Report



TABLE OF CONTENTS

MESSAGE FROM THE DIRECTOR

Director's Message.....	1
About LACRPC.....	2
Committees.....	3-4
Transportation Planning.....	5
Transit Planning.....	6
Safe Communities.....	7
CDBG, Info Services, & PPP.....	8
Developmental Controls.....	9
Financial Report.....	10

There are many accomplishments to be proud of as we look back on our agency's work in 2021. While COVID-19 continued to affect how we worked and communicated, LACRPC continued to provide a platform to share ideas and information regarding a host of local and regional issues. As a partnership of cities, villages, townships, and various community groups throughout Allen County, our goal is to help keep Allen County moving forward.

Without the extraordinary work of our talented staff, none of the projects highlighted in this report would be possible. I am incredibly proud of everything we accomplished together in 2021. Our team, partners, and residents are of paramount importance to our goal of developing and maintaining a comprehensive, coordinated, and continuing transportation planning process.

LACRPC looks forward to supporting and strengthening Allen County into 2022 through our efforts to provide long-term, strategic planning. We encourage you to participate and share your thoughts as we deliver a host of plans, projects, and funding to support continued growth.



Shane A. Coleman
Executive Director



7 STAFF MEMBERS

2 Cities

215,496 RESIDENTS SERVED

1 County

6 Partners

7 Villages

21 MEMBER ORGANIZATIONS

12 Townships

about

LACRPC

OUR MISSION IS TO PROVIDE THE BASIS FOR ONGOING COMPREHENSIVE DEVELOPMENT IN ALLEN COUNTY THROUGH THE IMPLEMENTATION OF SPECIFIC POLICIES, PLANS, AND REGULATORY CONTROLS.

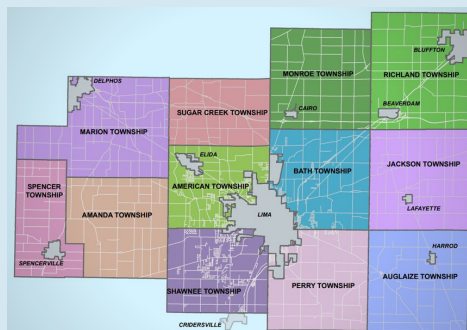
MEMBER ORGANIZATIONS:

- United Way of Greater Lima
- Allen County Public Health
- City of Lima
- Mercy Health
- West Ohio Community Action Partnership
- Lima/Allen County Chamber of Commerce

The Lima-Allen County Regional Planning Commission (LACRPC) was established in September 1964 and assumed the powers and duties of the Allen County Planning Commission, which was created in 1954. LACRPC is also the federally designated metropolitan planning organization (MPO) for Allen County, including the portions of the City of Delphos and the Villages of Bluffton and Cridersville that lie outside of Allen County. The agency is responsible for comprehensive planning and program implementation within Allen County and its various communities and serves in an advisory capacity to community decision-makers who have come to rely on data, analyses, and planning recommendations provided by the Commission. A 34-member Board of Directors assists the Commission by reviewing and recommending plans and strategies to develop and improve the entire region. In addition, the agency works closely with other professionals such as city and county engineers, sanitary engineers, prosecutors, and auditors. Other agencies like Allen County Public Health, Allen Soil and Water Conservation District, Ohio Department of Transportation, Ohio Department of Natural Resources, Ohio Department of Public Safety, Ohio Environmental Protection Agency, and multiple local utilities provide valuable input to this process.

MEMBER MAP

Over 20 local jurisdictions including cities, townships, and villages in Allen County are members of the LACRPC. We work together to promote and advocate for all jurisdictions in Allen County.



LACRPC STAFF

- Shane Coleman**, Executive Director
- Marlene Schumaker**, Finance Administrator
- Dode Makley**, Associate Planner
- Cody Doyle**, Associate Planner
- Adam Haunhorst**, Planning Engineer
- Colleen Barry**, Assistant Planner
- Shaunna Basinger**, Public Outreach and Community Program Planner

2021 Regional Planning Commission

OFFICERS

Steve Ewing, president
Howard Elstro, president-elect
Robert Sielschott, secretary
Dave Belton, treasurer

DELEGATES

Beth Seibert, Allen County
Brad Swick, Allen County
Susan Wildermuth, Allen County
Brion Rhodes, Allen County
Tracie Sanchez, Allen County
Drew Fields, Allen County
Susan Crotty, City of Lima
Howard Elstro, City of Lima
Todd Gordon, City of Lima
Tony Wilkerson, City of Lima
Bruce Plumb, City of Lima
Chuck Sheirloh, City of Lima
Thomas Tebben, City of Lima
James Mehaffie, City of Delphos
Mike Leis, Villiage of Beaverdam
Mitch Kingsley, Village of Bluffton
Todd Wilkin, Village of Cairo
Dan Kaseman, Village of Elida
Tom Ekelberry, Village of Harrod
Sean Chapman, Village of Spencerville
Doug Post, Amanda Township
Paul Basinger, American Township
Larry Vandemark, American Township
Steve Ewing, Auglaize Township
Robert Sielschott, Bath Township
Jerry Gilden, Marion Township
Steven Beam, Monroe township
Kevin Cox, Perry Township
Walter Rysz, Richland Township
Dave Belton, Shawnee Township
Russ Holly, Shawnee Township
Rick Keller, Spencer Township
Kent McCleary, Sugar Creek Township

EXECUTIVE COMMITTEE

Dave Belton Brion Rhodes
Kevin Cox Chuck Shierloh
Howard Elstro Beth Seibert
Steve Ewing Robert Sielschott
Jerry Gilden Thomas Tebben
Mitch Kinglsey Larry Vandemark
Doug Post

ADMINISTRATIVE AFFAIRS COMMITTEE

Dave Belton Brion Rhodes
Howard Elstro Robert Sielschott
Steve Ewing Thomas Tebben
Jerry Gilden Susan Wildermuth
Doug Post

CITIZENS ADVISORY COMMITTEE

Steve Beam Rick Keller
Mark Bishop Kathy Luhn
Tyler Black Patrick Maloney
Phil Briggs Kent McCleary
Norm Capps John Schneider
Alice Curth Charles Schreck
Derry Glenn Alison Sites
Matthew Graff Brad Swick
Casey Heilman Rodney Watkins
Michael Hensley Todd Wilkin
Ahmad Houston Mary Williamson

CITIZENS ACCESSIBILITY ADVISORY COMMITTEE

Sarah Beery Joe Lewis
Alice Curth Jodi Owens
Joan Davis Elisha Reineke
Carole Enneking Holly Rex
Karen Garland Beca Scheidler
Michael Hensley Charles Schreck
Jacob King Josh Unterbrink
Nell Lester

Committees and Members

COMMUNITY DEVELOPMENT COMMITTEE

Jon Basinger	Russ Holly
Laura Bassitt	Ahmad Houston
Mark Bishop	Dan Kaseman
Berlin Carroll	Greg Kessen
Sean Chapman	Mitch Kinglsey
Susan Crotty	James Mehaffie
Tom Ekelberg	Lynn Moeller
Sue Gerker	Tony Wilkerson
Todd Gordon	

DEVELOPMENTAL CONTROLS COMMITTEE

Paul Basigner	Doug Post
Brad Baxter	Walter Rysz
Mark Bishop	Chuck Scheirloh
Kevin Cox	Beth Seibert
Steve Ewing	Kim Stiles
Jerry Gilden	Dave Stratton
Kent McCleary	

TRANSPORTATION ADVISORY COMMITTEE

Frank Burkett	Mike Leis
Sean Chapman	James Mehaffie
Eric Davis	Shawn McPheron
Karen Garland	Jed Metzger
Daniel Hoying	Ron Meyer
Dan Kaseman	Kirk Niemeyer
Steve Kayatin	Charles Schreck
Greg Kessen	Tony Wilkerson
Cindy Leis	

TRANSPORTATION COORDINATING COMMITTEE

Dave Belton	Robert Sielschott
Kevin Cox	Chuck Scheirloh
Joan Davis	Doug Post
Howard Elstro	Brion Rhodes
Steve Ewing	Charles Schreck
Jerry Gilden	Beth Seibert
Mitch Kingsley	Thomas Tebben
Frank Burkett	Larry Vandemark

LIMA CHAMBER OF COMMERCE MANUFACTURER'S COUNCIL

The Regional Planning Commission recognizes freight as a particularly important sector of the economy as freight movements effect everyone both directly and indirectly. The MC is comprised of area manufacturers, trucking firms, rail services, public sector engineering and public and private sector economic development representatives. It's primary responsibility is to help public-sector policy-makers, planners, and engineers better understand the complexities associated with freight movement to more effectively guide public investment in the transportation infrastructure.

Chuck Holloway	Shane Coleman
Joe Faine	Tracie Sanchez
Dave Stratton	Teri L. Silone
Cindy Leis	Todd Sutton
Heath Alloway	Russ Decker
Jordan Darbyshire	Joe Patton
Anne Schemmel	John Ficorilli
Chalres L. Gasperetti	Shannon S. Shartell
Kevin Bill	John Shaver
Kurt Oates	Bob Hartman
Kendall House	Jeff Hager
Claudio Ingaramo	James Rudolph
Heather Rutz	Gary Burns
Jas Gill	Rich Rudolph
Mark Krohn	Karen Slawinski
Hank Kennedy	Keith Hamburg
Rick Deibel	Dan Risser
Craig Hohenbrink	Devin Parker
Allen Best	Andrew Wannemacher
Drew Fields	Scott A. Cockerell
Jamie Hamilton	Kevin Lee Rigg
Joe Krendl	

THANK

you

to all those who give of
their time, energy, and
expertise to help us better
serve our communities.

TRANSPORTATION PLANNING

As the Metropolitan Planning Organization, LACRPC provides cooperative, comprehensive, and continuous transportation planning to the Lima urbanized area. This process ensures the region's local transportation network continues to be developed consistent with the safe and efficient movement of people and freight. The MPO's overall purpose is to allocate transportation investments of federal and various other transportation funding resources, provide a comprehensive examination of the Lima area's future, and facilitate the collaboration of governments, agencies, interested parties, and residents in the planning process.

Transportation

- ✓ Completed FY2022 Unified Planning Work Program
- ✓ Updated FY21-24 Transportation Improvement Program
 - a. Increased allocations to Delphos SRTS Project
 - b. Increased allocations to Bluffton SR103 Multi-Use Path Project
- ✓ Thayer Road Reclassification Project
- ✓ Speed Studies (Hume Road, State Route 103, and Village of Harrod)
- ✓ Electric Vehicle Charging Infrastructure Review
- ✓ Allen County Bridge Inventory Update
- ✓ Lima Main Street Project Data Collection
- ✓ Streetlight Data Analyses
- ✓ 2020 Crash Summary Report
- ✓ 2020 Fatal Crash Report
- ✓ High Crash Intersection Review
- ✓ Adopt Safety Performance Measures



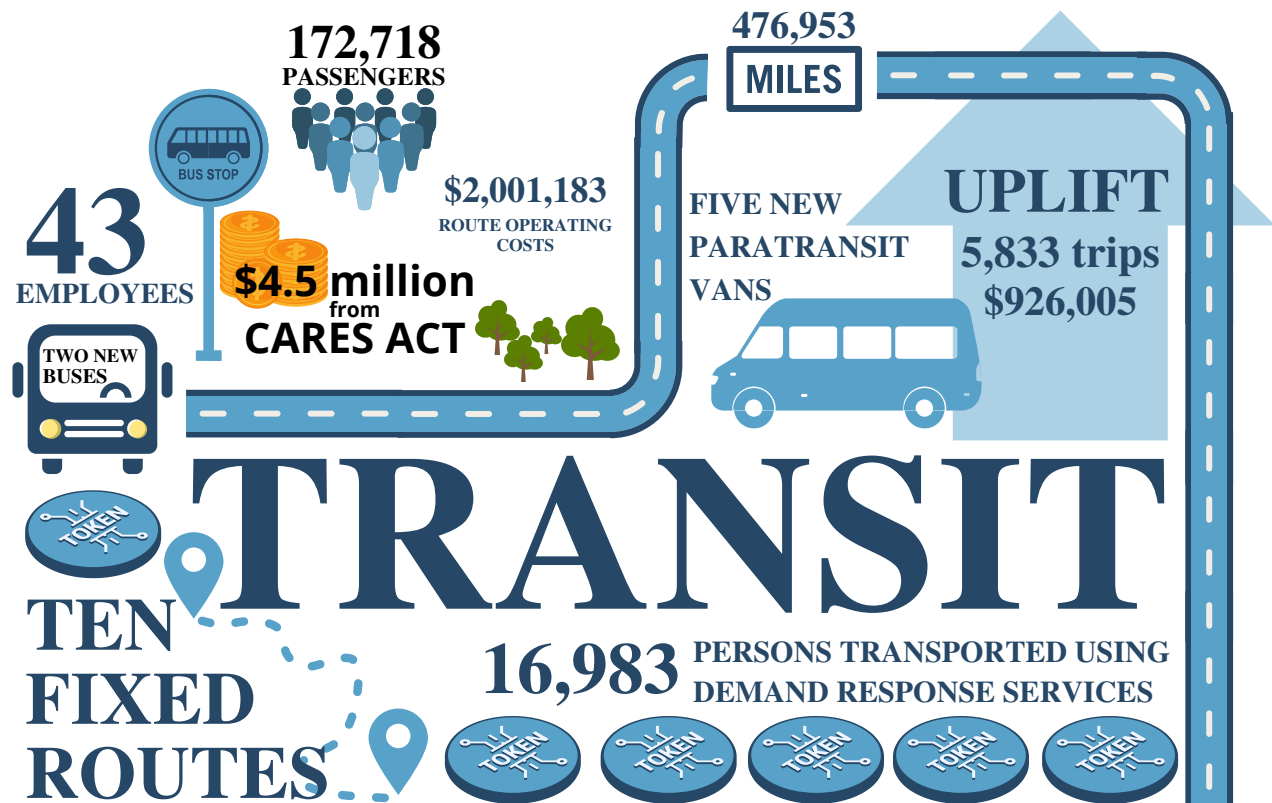
Long Range Planning, Sustainability, and Environment

- ✓ Village of Harrod Comprehensive Plan – New
- ✓ Village of Elida Comprehensive Plan – Update
- ✓ City of Lima Comprehensive Plan – New
- ✓ Broadband Coverage and Accessibility Study
- ✓ Ottawa River Lowhead Dam Project Consultation
- ✓ Lima Crime Data Collection
- ✓ Ohio Department of Education Designated School Mapping

Active Transportation

- ✓ Biannual Bike and Pedestrian Count Program
- ✓ ADA Transition Plan Initiation (Village of Bluffton and Village of Spencerville)
- ✓ Staff presented at ODOT ADA Compliance Webinar





The Allen County Regional Transit Authority (ACRTA) was created in 1974 by the Board of Allen County Commissioners to provide needed transportation services across Allen County. Transit management reflects a seven-member Board of Trustees, appointed by the Allen County Commissioners, who oversee the operations of fixed-route and complementary paratransit services. In addition, ACRTA works with ODOT and LARPC to optimize federal and state funding for necessary rolling stock, equipment, maintenance, facility upgrades, and technical assistance.

RTA Parking Lot Project & Beautification Efforts

The parking lot project on the corner of Union/Central and North is set to break ground mid-May to beginning of June 2022. This new parking lot will offer parking for RTA employees as well as some public parking and fits into the beautification and revitalization efforts being seen all across Downtown Lima. With fencing and greenspace including flowering and shade tree, the parking lot project is sure to brighten and boost the area.



Image provided by Beam Designs

SAFE COMMUNITIES

Since 1994, the LACRPC has managed traffic safety-related projects using federal funds through grants administered by the Ohio Department of Public Safety (ODPS). The 2021 Safe Communities Grants models a National Highway Traffic Safety Administration plan that targets interventions to reduce the occurrence of traffic crashes and the associated economic, societal, and personal costs. A few 2021 initiatives include:

- Countywide observational seatbelt surveys documented 80.1% restraint use.
- Promotionals resulted in an estimated 14 million traffic safety media impressions, both traditional and digital media, encouraging seatbelt use, motorcycle safety, risk awareness associated with impaired driving and distracted driving as well as bicycle/pedestrian safety, railroad grade crossing, etc.
- Participated in National Night Out with partners at the Allen County Sheriff's Office.
- Awareness materials, promoting traffic safety, were distributed, including "I'm bucklin' it" McDonald's dessert coupons.
- Two events on motorcycle safety and awareness between Lima Half-Mile motorcycle races and the Blessing of the Bikes.
- Promoted children's bicycle safety with partners Activate Allen County, St. Rita's Medical Center, and Lima Memorial Health System by distributing bicycle helmets to area youth.



2021 SAFE COMMUNITIES FOPA & FOP AWARDS

Children's Safety Award

Inspector Warren Pughley

Lima Fire Department

Outstanding Service Award

Patrol Officer Tyler Cramer

Shawnee Police Department

Traffic Safety Award

Trooper Sanders-Tirado

Ohio State Highway Patrol

Lifetime Achievement Award

Russ Holly

Apollo Career Center & Motorcycle Ohio

Lifetime Achievement Award

Evelyn Smith

Lima-Allen County Regional Planning Commission



ACTIVATE ALLEN COUNTY

Our local built environment is largely determined by land use and transportation decisions, and these decisions affect the quality of life of the community over the long term. Activate Allen County looks to use civic engagement and regulatory controls to address issues with the help of a broad-based coalition of local health care providers, major employers, development professionals and community leaders whose goal is to create a community in which all residents can thrive in our built environment. Concerns and discussions over transportation costs as well as the expenditures required for roadway maintenance and safety projects are finding allies with local residents who are concerned with active transportation, urban sprawl, farmland, preservation, and water/air quality standards. In a spirit of cooperation, this committee is working to explore the nature of these issues from a more holistic perspective. In a unique partnership, the RPC has entered into conversations, programming, and activities to examine sustainability and sustainable development on a number of different levels focusing on developing a balanced and equitable approach to transportation, land use, employment and an improved quality of life.

- Allen County
- Allen County Public Health
- City of Lima
- Lima/Allen County Chamber of Commerce
- Lima-Allen County Regional Planning Commission
- Mental Health & Recovery Services Board
- Mercy Health
- Ohio State University- Lima
- United Way of Greater Lima
- West Ohio Community Action Partnership

COMMUNITY BLOCK GRANT (CDBG)

The Community Development Block Grant (CDBG) program is a flexible program that provides communities with resources to address a wide range of unique community development needs. The CDBG grants support affordable housing, necessary infrastructure improvements, and the delivery of antipoverty programs in eligible communities.

The Allen County Board of Commissioners is responsible for developing and delivering eligible local projects consistent with the program's national objectives. However, projects must benefit low-to-moderate income persons, aid a targeted population (such as senior citizens or the disabled), or provide for the elimination of slum/blight conditions.

In 2021, Allen County worked to deliver Community Housing Improvement Program Preservation (CHIP) services to provide rehabilitation, first-time homebuyer assistance, emergency home repair, etc., to qualified residents of Allen County. In addition, the County CDBG Program, administered by RPC, funded WOCAP and GLCAP housing foreclosure counseling and fair housing education.



\$155,233 in CHIP Funds

-and-



\$218,931 in CHIP Funds

INFORMATION SERVICES

The LACRPC strives to provide information and data analysis to local decision-makers to enhance an intelligent decision making process. The Commission concentrates data collection and analysis activities in community development, transportation, environmental planning, and other areas of local interest. Most of the information gathered by LACRPC is available on our website at www.lacrpc.com. We also provide information via our technical library, our designation as a local Census affiliate, and many relationships we have built throughout Allen County due to many opportunities to provide technical support. The agency website proved to be a valuable tool for local information as it recorded 4.6K hits and recorded 7.1K user sessions in 2021.

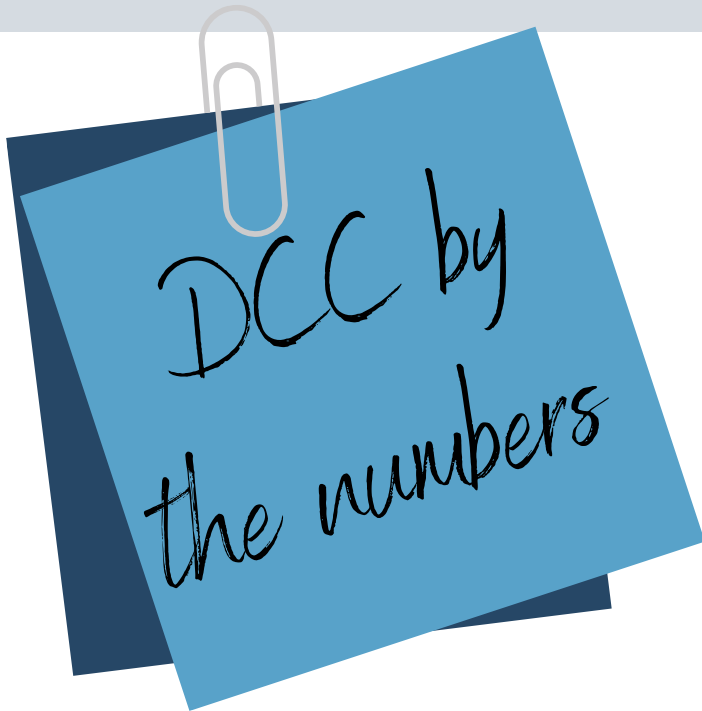
PUBLIC PARTICIPATION

LACRPC has a unique and vital leadership role in Allen County. Founded upon regional collaboration, cooperation, and consensus-building principles, LACRPC serves as the common ground where area partners come together to work toward a shared vision across the region. Together, public and private partners develop and implement innovative and sustainable strategies that enhance the region's quality of life and economic vitality.

LACRPC recognizes that a public participation plan (PPP) provides methods, strategies, and desired outcomes for public involvement and is committed to meaningful and proactive public participation. This plan includes outreach to a broadly defined audience of affected parties to ensure projects and planning activities evolve from and address public needs. Providing a forum for public participation demonstrates that the region recognizes citizens' rights to be heard. These forums, coupled with careful attention to feedback, will result in better, well-informed decision-making. To find out how you can participate, visit our website at www.lacrpc.com.

DEVELOPMENTAL CONTROLS

LACRPC, in conjunction with a host of local agencies, assists its members in monitoring, reviewing, and approving development activities within Allen County while helping establish regulatory controls to minimize adverse environmental and economic effects as a result of development. The agency administers the minor and major subdivision process and floodplain regulations in the unincorporated areas of Allen County. In addition, the agency is responsible for the review of a host of zoning issues every year.



SUBDIVISION REGULATIONS

- 31 Minor Land Divisions
- 41 Exempted Land Divisions
Affecting 947,219 Acres
- 49 Land Transfers
- 7 Variance Requests
American-Auglaize-Bath-Jackson-Sugar Creek

Examined Major Subdivision Process for:

- Westminster Heights (American)
- Springbrook Estates (Bath)
- Delmar Subdivision (Perry)
- Brookline Subdivision (American)
- Applewood Estates (Shawnee)

Overall Development Plan:

- Country Aire Expansion 5-C
- Lost Creek Subdivision

ZONING REGULATIONS

- 7 Zoning Amendments
American-Perry-Shawnee
- 7 Zoning Petitions
Bath-Marion-Richland-Shawnee

FLOODPLAIN MANAGEMENT

- 6 Violations
- 11 Permits
Lafayette-Marion-Sugar Creek
Spencerville-Delphos-Richland
- ✔ Participated in map revision process
- ✔ Participated in ODNR Community Assistance Visit



FINANCIAL REPORT

The LACRPC expended a budget of \$630,921 in CY 2020. Local membership assessments of \$122,465 were used in the operating budget to leverage state and federal planning grants by approximately 5.15 to 1. The Federal Highway Administration (FHWA), Federal Transit Administration (FTA), and the Ohio Department of Transportation (ODOT) Transportation funded the agency’s transportation planning activities. At the same time, the Ohio Department of Public Safety (ODPS) supported various safety initiatives.

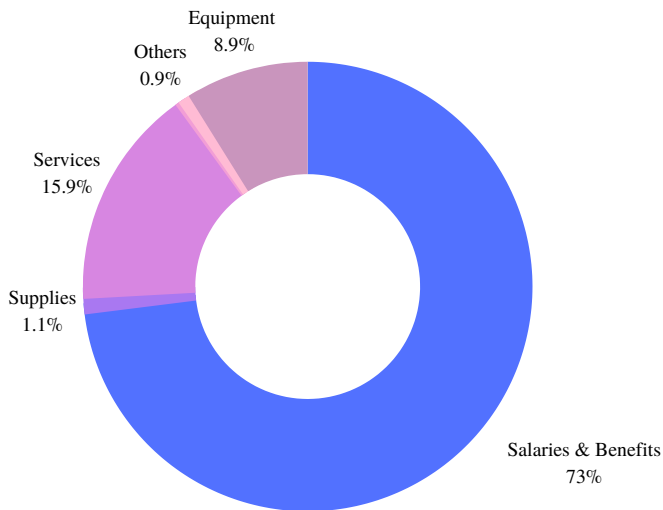
The LACRPC Board of Directors is responsible for making sure that sound decisions are made concerning spending and stimulating the flow of state and federal funds in Allen County. Member governments invested \$122,465 in per capita fees to the LACRPC. The community received grants, services, and capital improvements of more than \$22.90 million. A simple assessment reveals “a return of approximately \$186.96 to the larger community for every \$1 entrusted to LACRPC in CY 2021.” In addition, LACRPC delivered noncash benefits to its members by providing a vehicle to exchange valuable information.

Delivering a Return

"A RETURN OF APPROXIMATELY \$186.96 TO THE LARGER COMMUNITY FOR EVERY \$1 ENTRUSTED TO LACRPC."



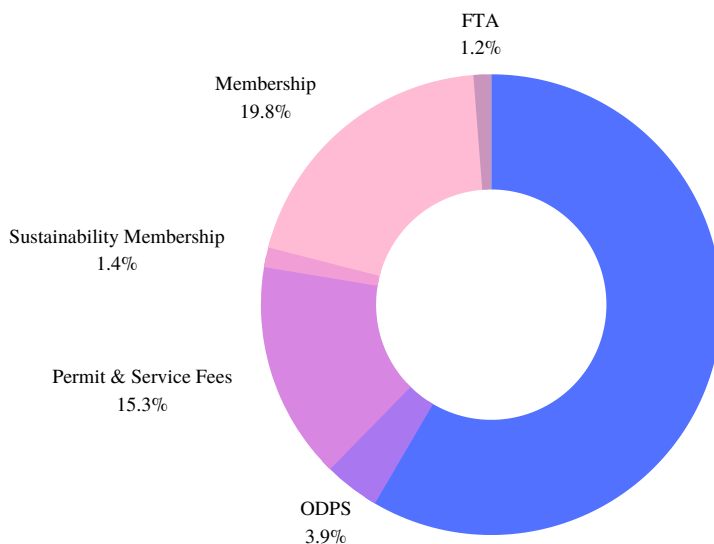
EXPENSE



Expenses	Amount
Salaries & Benefits	\$460,678
Supplies	\$6,982
Services	\$100,100
Repairs	\$1,707
Others	\$5,405
Travel	\$0
Equipment	\$56,049

Total: \$630,921

INCOME



Income	Amount
FHWA & ODOT	\$362,147
ODPS	\$24,197
Permit & Service Fees	\$94,672
Sustainability Membership	\$8,648
Membership	\$122,645
FTA	\$7,685

FHWA & ODOT
58.4%

Total: \$619,814



Lima/Allen County
**REGIONAL PLANNING
COMMISSION**



130 W. North Street, Lima, Ohio 45801

Phone: 419-228-1836

www.lacrpc.com