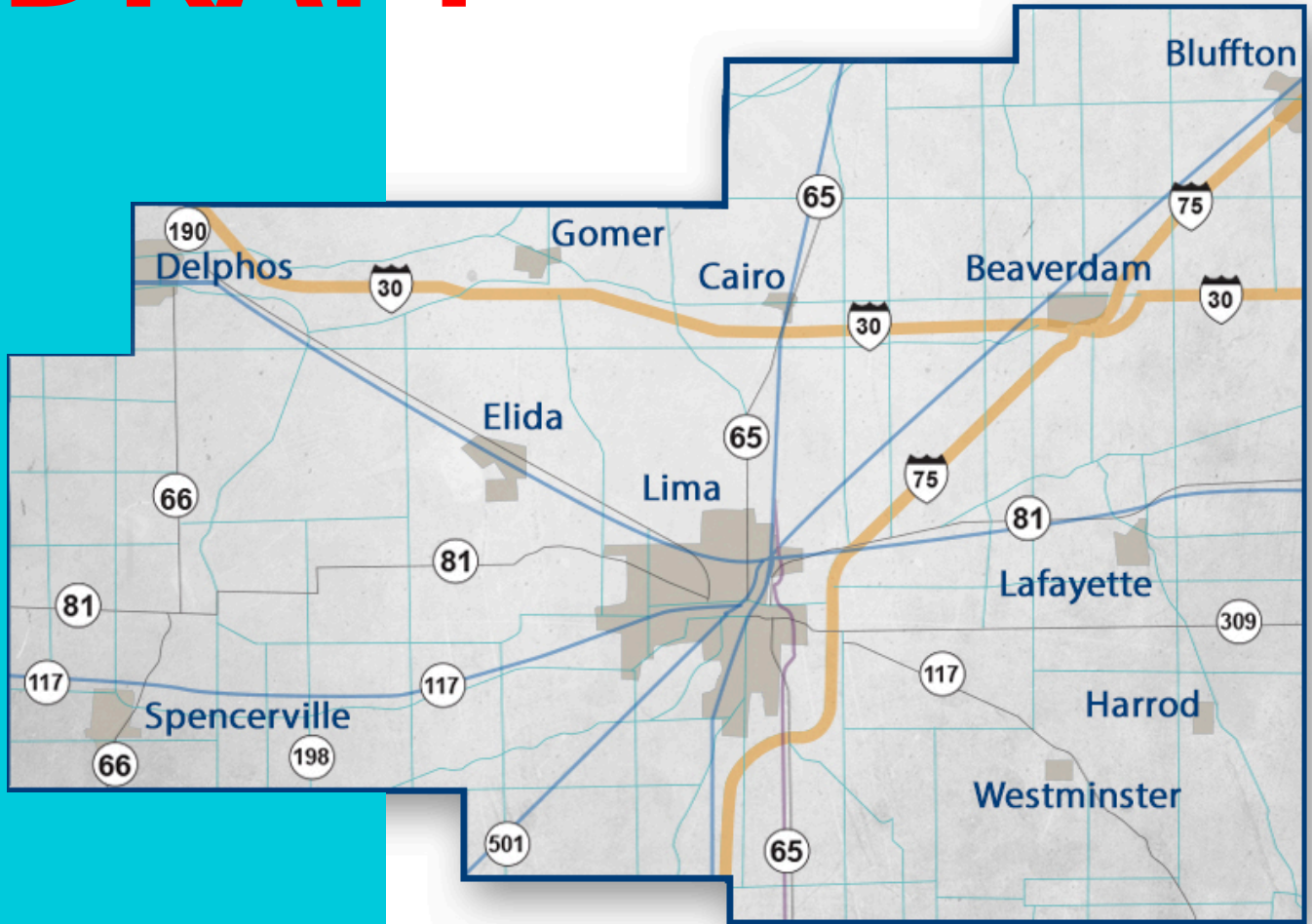


Allen County Fatal Crash Report 2024

DRAFT



Lima/Allen County
REGIONAL PLANNING
COMMISSION



Table of Contents

Table of Contents	i
Introduction	1
Figure 1: 2024 Crash Severity	1
Figure 2: Fatals by Political Subdivision	1
2024 Traffic Crash Overview	2
Figure 3: Fatal Crashes Over Time	2
Safety Based Performance Measures	3
Historical Crash Comparison	4
Figure 4: 2024 Fatal Crashes by Month	4
Figure 5: Age of Drivers	5
Figure 6: Safety Equipment Used	5
Figure 7: Fatal Crashes by Weather	5
2024 Crash Maps	6
Appendix A:	7

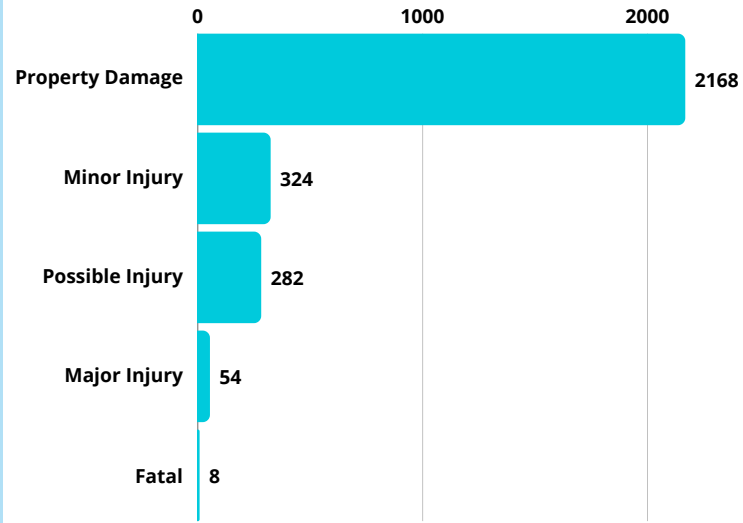
The preparation of this report was financed in part by the Federal Highway Administration (FHWA), the Ohio Department of Transportation (ODOT), the Ohio Department of Public Safety (ODPS), and local units of government. This report does not reflect the official view or policies of the FHWA, ODPS, or ODOT. This report does not constitute a standard specification or regulation. The contents of this report represent the work of the Lima-Allen County Regional Planning Commission (LACRPC). The report does not represent ODOT, ODPS, or the National Highway Traffic Safety Administration (NHTSA) standard or policy. Questions or concerns should be forwarded to the LACRPC at 130 W. North Street, Lima, Ohio 45801 (www.LACRPC.com).

Introduction

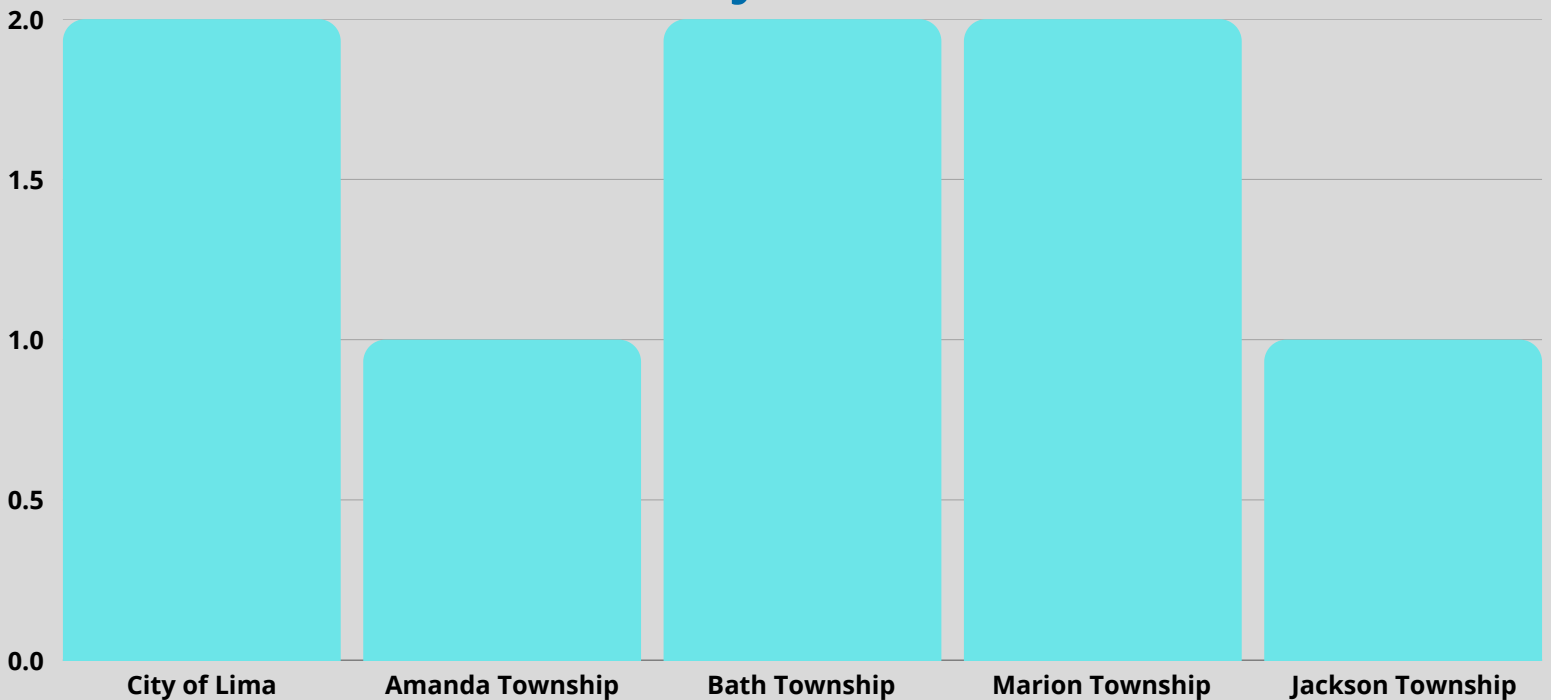
The Lima-Allen County Regional Planning Commission (LACRPC) is pleased to present the 2024 Fatal Crash Report for Allen County, Ohio. This report reflects fatal motor vehicle crashes for the calendar year 2024 and intends to provide the reader with a clear summary of the year's fatal crashes. It will attempt to provide our members with sufficient data to make educated decisions while managing traffic. The contents of this report represent the work of the LACRPC. The report does not represent a standard or policy of FHWA, ODOT, ODPS, or the NHTSA. Please forward any questions or concerns to the LACRPC at 130 W. North Street, Lima, Ohio 45801 (www.LACRPC.com). This report presents data across various topics, but if additional data is needed, please do not hesitate to contact LACRPC's office directly at (419) 228-1836.



2024 Crash Severity



Fatal Crashes by Political Subdivision





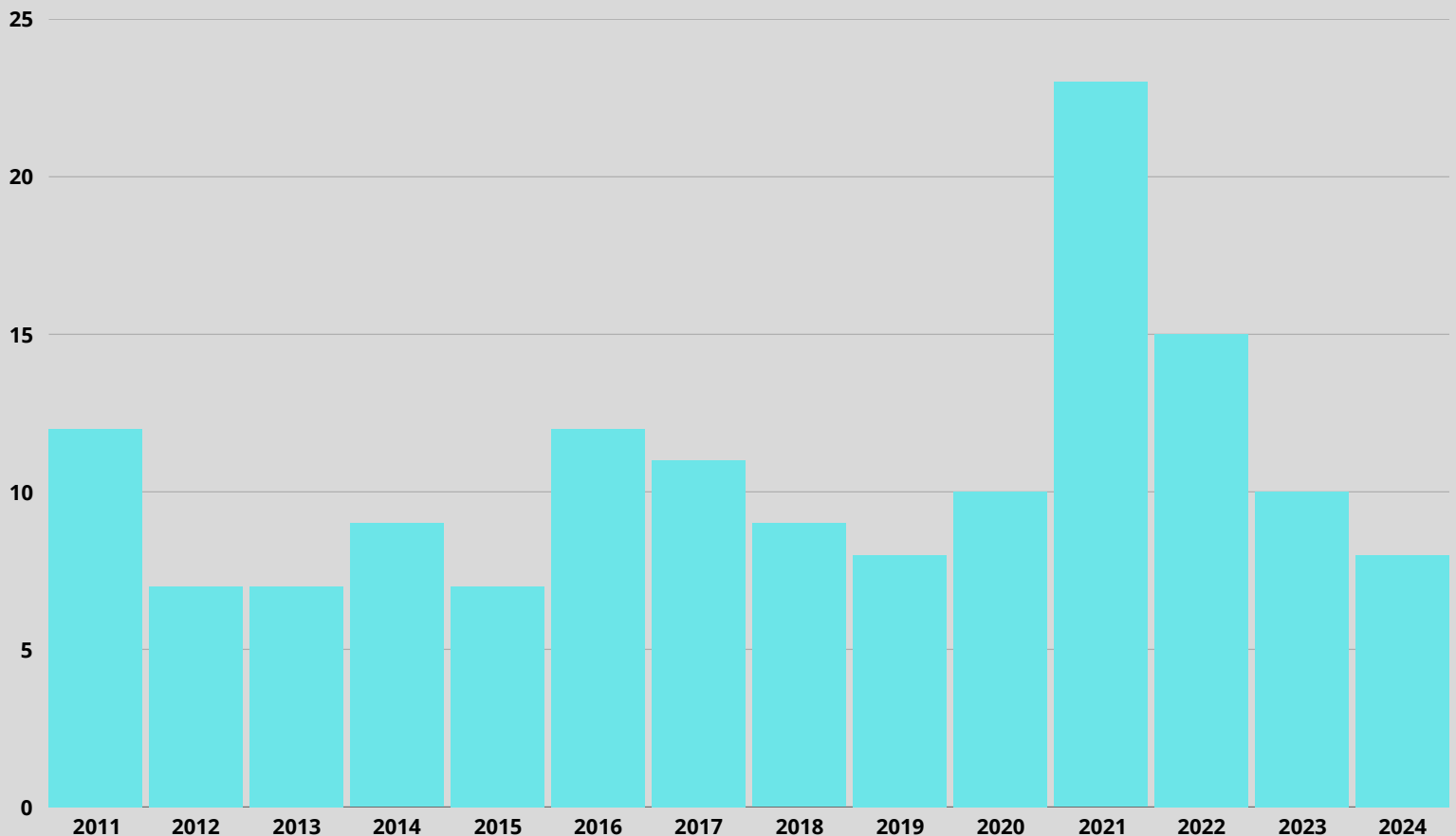
2024 Traffic Crash Overview

A total of **2,838** crashes occurred within LACRPC's planning area in 2024. All crashes provided within the Ohio Department of Transportation's (ODOT) GIS Crash Analysis Tool (GCATS) system were included in this report. There were 8 fatal crashes, **660** involving injuries of varying degrees, and **2,168** resulting in property damage only (see attached statistical sheets). Regarding personal costs, 9 individuals were killed and **951** injured in crashes in 2024.

Allen County did see a reduction in fatalities from the 10-year rolling average of 12 fatalities down to eight. The Performance Measure of 65 Serious Injuries was also accomplished with 54 in 2024. This metric is often forgotten in transportation safety discussions. A serious injury crash is a happenstance away from being a fatality and may be a viable statistic for identifying locations in need of improvement before a fatal occurs.

*Totals are subject to change as end of year crash reports become available.

Fatal Crashes Over Time



Safety Based Performance Measures



	Performance Measure Goal	Number Occured
1	Total Fatalities - 12	9
2	Total Serious Injuries - 65	54
3	Fatal Rate 0.94 /100 MVM	0.63/100 MVM
4	Serious Injury Rate - 5.09/100 MVM	4.23/100 MVM
5	Ped/Non-Motorized Fatal/Serious Injuries - 10	7

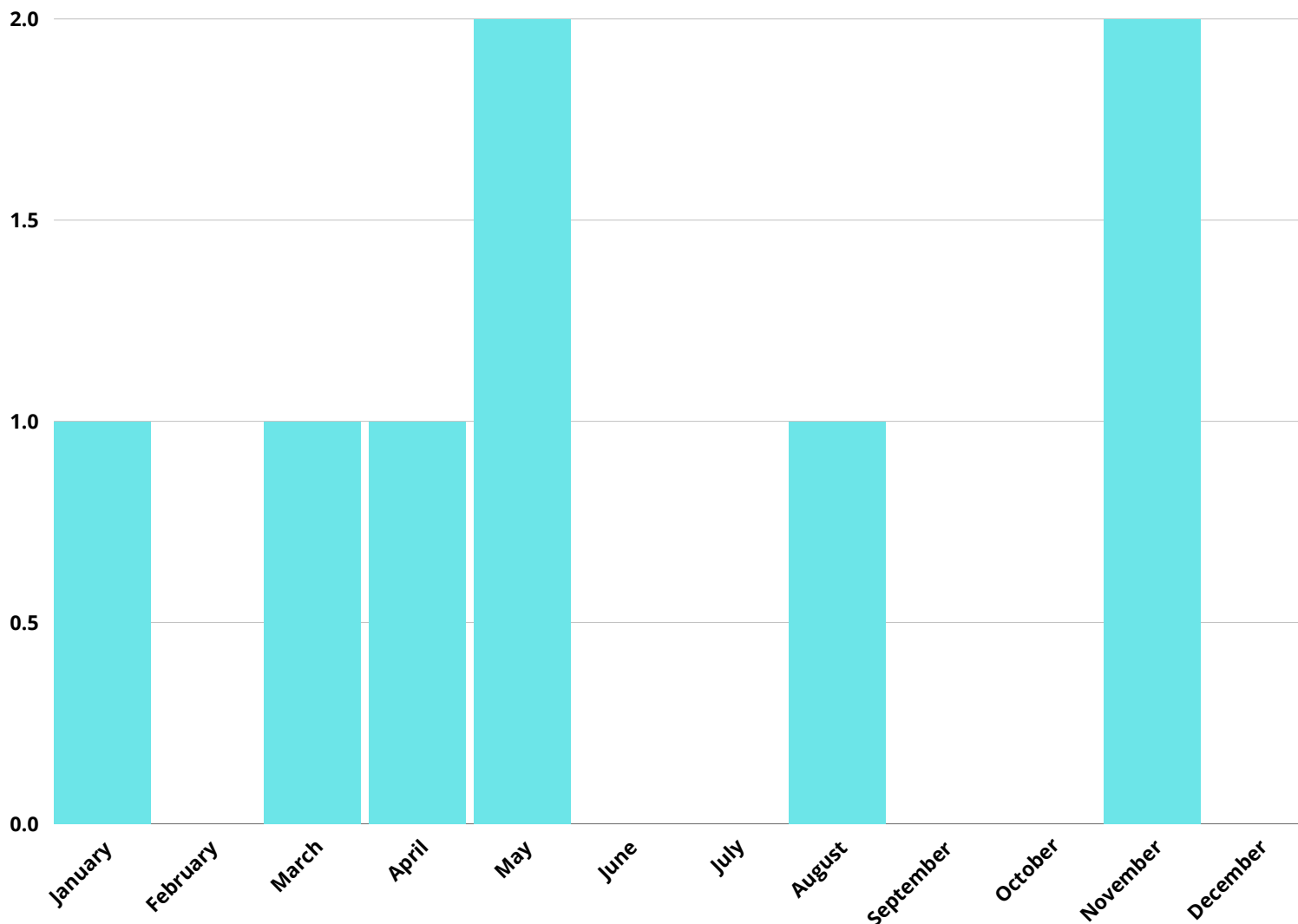
*Totals are subject to change as end of year crash reports become available.

Safety Based Performance Measures

The goal of this report is to improve roadway safety in Allen County for all users. A set of quantitative measurements must be established as a baseline comparison for past and future data to achieve these goals. The FAST Act, established under the Obama Administration, establishes these goals as performance measures. Per the FAST Act standards and concurrence of statewide goals set by ODOT, this MPO committed to a goal of a 2% reduction in CY 2024, using a 5-year rolling average (2019-2023) as a baseline in all five (5) safety metrics. These metrics include the total number of fatalities, the fatality rate per 100 million vehicle miles (MVM), the total number of serious injuries, serious injuries per 100 MVM, and non-motorized fatalities and/or serious injuries. The MPO uses these performance measures to prioritize future improvements and make recommendations to governmental bodies. Please note that other performance measures were established by the FAST Act but are not applicable under the scope of this report.



2024 Fatal Crashes by Month

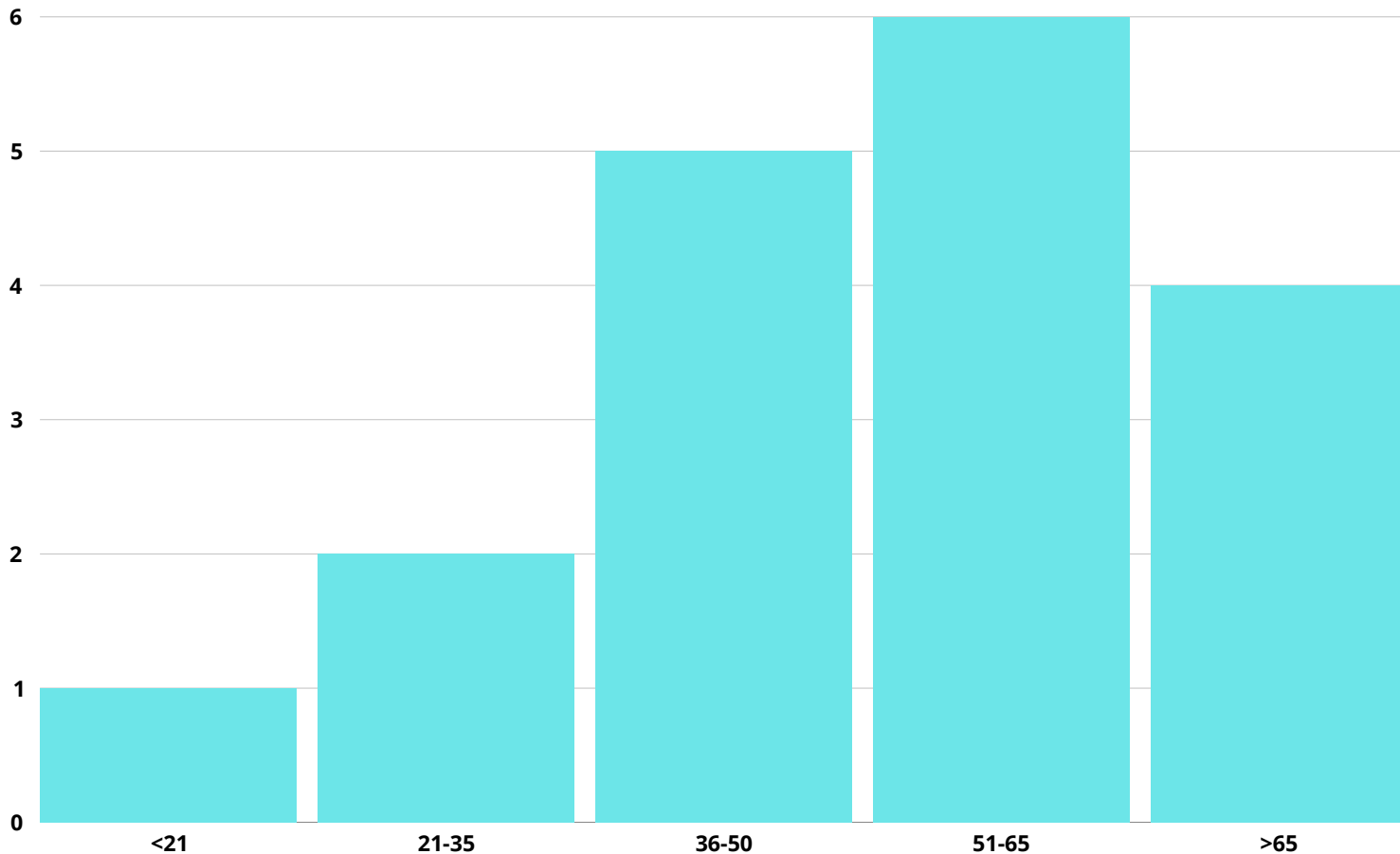


Historical Crash Comparison

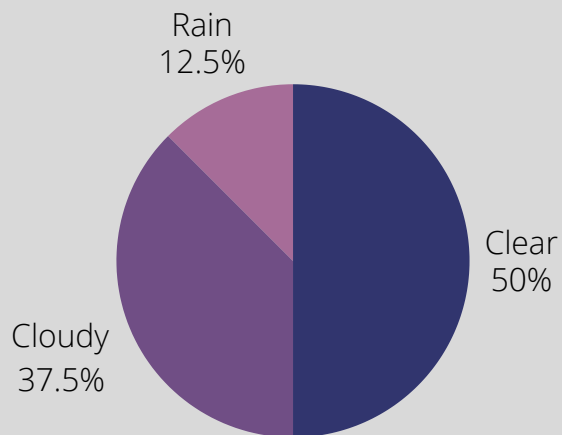
The overwhelming majority of crashes occurred on dry roadways (87.5%) during the day (62.5%). Fatal crashes seem to correspond near peak volumes 4:00 p.m. to 5:00 p.m. (3); and 6:00 a.m. and 10:00 a.m. (3). November and May each saw two fatal crashes. Drawing inferences from any statistic is less than ideal with such a limited sample size. Even year to year fatalities will vary and, while the hope is that transportation safety is improving, it cannot be surmised on a year-to-year basis.



Age of Drivers Involved In Fatal Crashes



3 OUT OF 9 FATALITIES WERE NOT USING SAFETY EQUIPMENT



FATAL CRASHES BY WEATHER CONDITION



2024 Fatal Crash Maps

Crash 1	I
Crash 2	II
Crash 3	III
Crash 4	IV
Crash 5	V
Crash 6	VI
Crash 7	VII
Crash 8	VIII
Fatal Crash Locations	IX

Map 1

2024 Fatal Crash #1:

State Route 81 and Neubrecht Rd.;

Bath Township



Crash Facts:

Date and Time: 01/28/2024 @ 5:52 A.M.

Conditions: Dark lighted roadway, wet, rain.

Vehicle Description: 1 Units (1 Passenger Car, 1 Pedestrian).

Crash Type and Description: Unit 1 was southwest on S.R. 81 in the right lane. Unit 2 was injured, laying in the right lane of S.R. 81, as a result of a previous traffic crash. Unit 1 struck unit 2.

Persons involved and Fatalities: 2 Persons involved; 1 fatality.

Safety Equipment: Utilized by Driver of Vehicle.



Map 2

2024 Fatal Crash #2:

400 Block W. O'Connor Ave., City of Lima



Crash Facts:

Date and Time: 03/29/2024 @ 2:33 A.M.

Conditions: Dark lighted roadway, Dry, Clear.

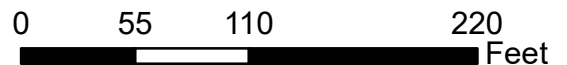
Vehicle Description: 2 Units (1 SUV, 1 Passenger Car).

Crash Type and Description: Unit 1 was legally parked facing westbound.

Unit 2 was traveling eastbound and struck Unit 1. Both vehicles were disabled in the crash, and the driver of Unit 2 was transported off the scene for life threatening injuries.

Persons involved and Fatalities: 1 Person involved; 1 fatality.

Safety Equipment: None.

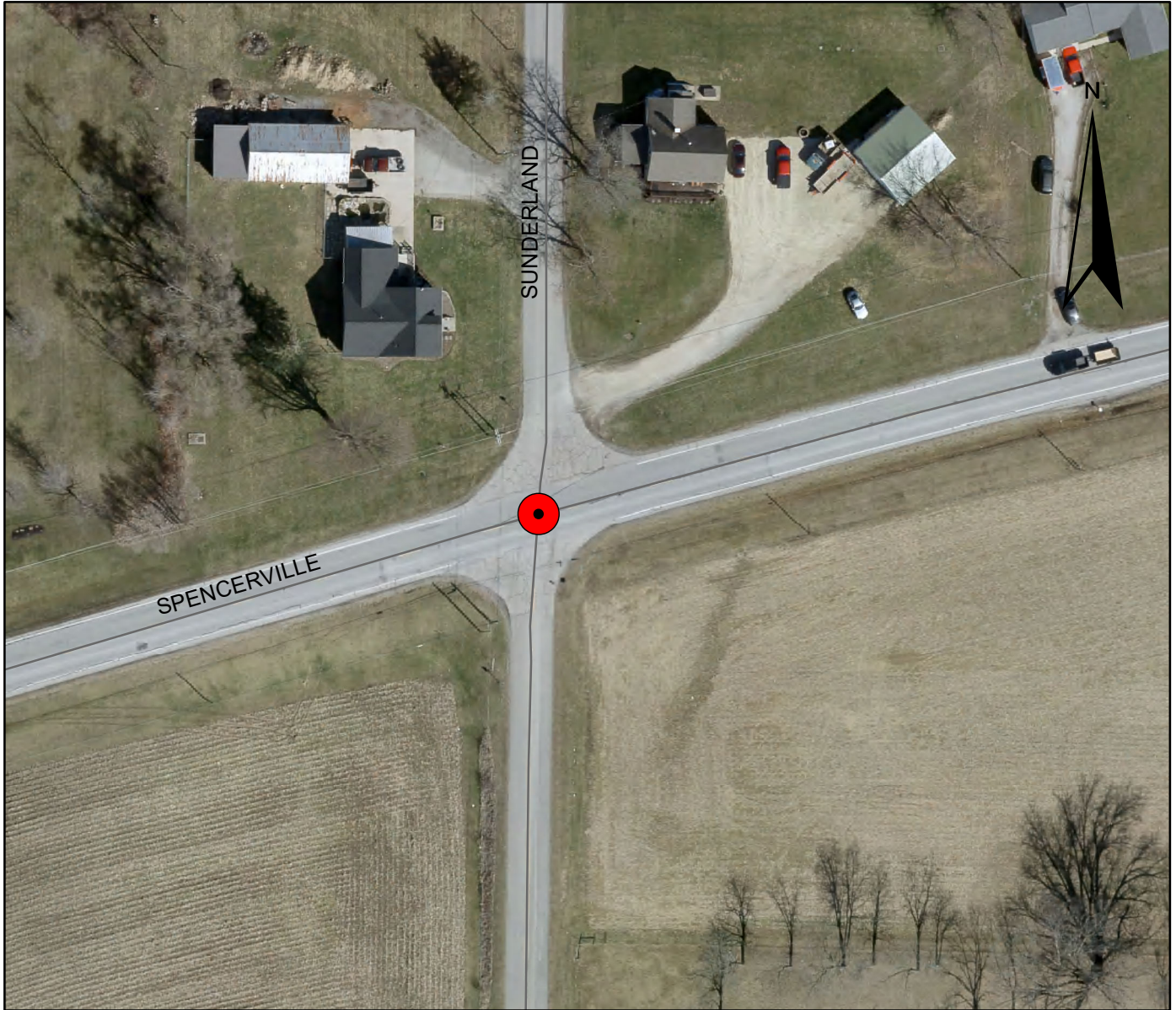


Map 3

2024 Fatal Crash #3:

Intersection of S.R. 117 and Sunderland Rd.;

Amanda Township



Crash Facts:

Date and Time: 04/17/2024 @ 9:30 A.M.

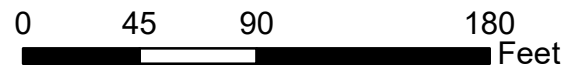
Conditions: Dawn, cloudy, dry roadways.

Vehicle Description: 3 Units (1 SUV, semi tractor, and 1 Passenger Car).

Crash Type and Description: Unit 1 was traveling northbound on Sunderland Rd. Unit 1 failed to stop and struck Unit 2, who was traveling southwest on S.R. 117. Unit 1 then spun out and was struck by Unit 3 who was traveling northeast on S.R. 117. Unit 1 then overturned, went off the south side of the roadway, and came to a stop. Unit 3 also left the south side of the roadway.

Persons involved and Fatalities: 3 Person involved; 1 fatality.

Safety Equipment: Lap and shoulder belt utilized by Units 2 and 3, no safety equipment utilized by Unit 1.



*Location approximate, based on officer GPS location.

Map 4

2024 Fatal Crash #4:

Intersection of Defiance Trail and U.S. 30.; Marion Township



Crash Facts:

Date and Time: 05/03/2024 @ 5:47 P.M.

Conditions: Daylight, clear, dry roadways.

Vehicle Description: 2 Units (2 Passenger Cars).

Crash Type and Description: Unit 2 was traveling east on U.S. 30 while Unit 1 was traveling south on Defiance Trail. Unit 1 stopped at the stop sign at the intersection of U.S. 30, then continued south into the roadway. Unit 1 then stopped in the median, and again continued south. Unit 2 struck Unit 1. Unit 1 then crossed the center line, went off the roadway, and came to rest in a ditch.

Safety Equipment: Used only by the occupants of Unit 1 (fatality occurred within Unit 2).

0 55 110 220 Feet



Map 5

2024 Fatal Crash #5: Redd Road.; Marion Township



Crash Facts:

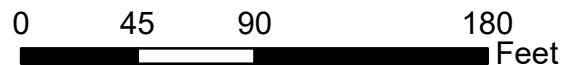
Date and Time: 05/20/2024 @ 10:08 A.M.

Conditions: Daylight, clear, dry roadways.

Vehicle Description: Unit 1 was southbound on Redd Road and drove off the right side of the roadway. Unit 1 then overcorrected, crossed the centerline and drove off the left side of the road.

Unit 1 then overturned and came to a rest. Driver of Unit 1 passed away on 6-6-2024

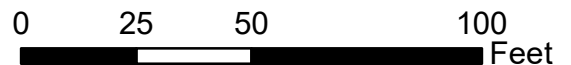
Safety Equipment: Unknown



Map 6

2024 Fatal Crash #6:

Intersection of E. McKibben St. and N. Jackson St.; City of Lima



Crash Facts:

Date and Time: 08/14/2024 @ 4:45 P.M.

Conditions: Daylight, clear, dry roadways.

Vehicle Description: 3 Units; 1 passenger car, 2 SUVs

Crash Description: Unit 1 was northbound on Jackson St.

Near McKibben St. and Unit 2 was traveling southbound on Jackson near McKibben St. Unit 3 was westbound on McKibben; at a speed in excess of 70MPH. Unit 3 became air borne when driving over the railroad crossing; ran the stop sign at McKibben; and struck the passenger side of Unit 2. Unit 2 was forced into Unit 1 before leaving the roadway. Units 2 and 3 came to rest off of the roadway. The operators of Units 2 and 3 sustained major injuries and were transported to local medical centers.

Persons Involved: 4 persons involved, 1 fatality.

Safety Equipment: Utilized by operator and occupant of Unit 1



*Location approximate, based on officer GPS location.

Map 7

2024 Fatal Crash #7:

Intersection of N. Hardin Rd. and S.R. 81; Jackson Township



Crash Facts:

Date and Time: 11/12/2024 @ 4:40 P.M.

Conditions: Daylight, clear, dry roadway

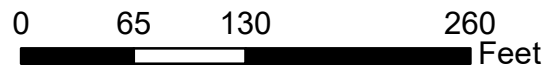
Vehicle Description: 3 Units; 2 SUVs and 1 Pickup Truck

Crash Description: Unit 1 was traveling south on N. Hardin Road.

Unit 2 was traveling southwest on S.R. 81, and Unit 3 was traveling northeast on S.R. 81. Unit 1 ran the stop sign and was struck by Unit 2 and then struck Unit 3. Unit 1 traveled off the right side of the roadway. Unit 3 traveled off the right side of the roadway and overturned.

Persons Involved: 4 persons involved, 2 fatalities

Safety Equipment: Used by all



Map 8

2024 Fatal Crash #8: Reservoir Road; Bath Township



Crash Facts:

Date and Time: 11/26/2024 @ 6:46 A.M.

Conditions: Dark, cloudy, dry roadway

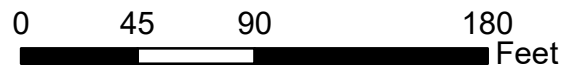
Vehicle Description: 2 Units; 1 Bicycle and 1 Pickup Truck

Crash Description: Both Units were traveling west on Reservoir Road.

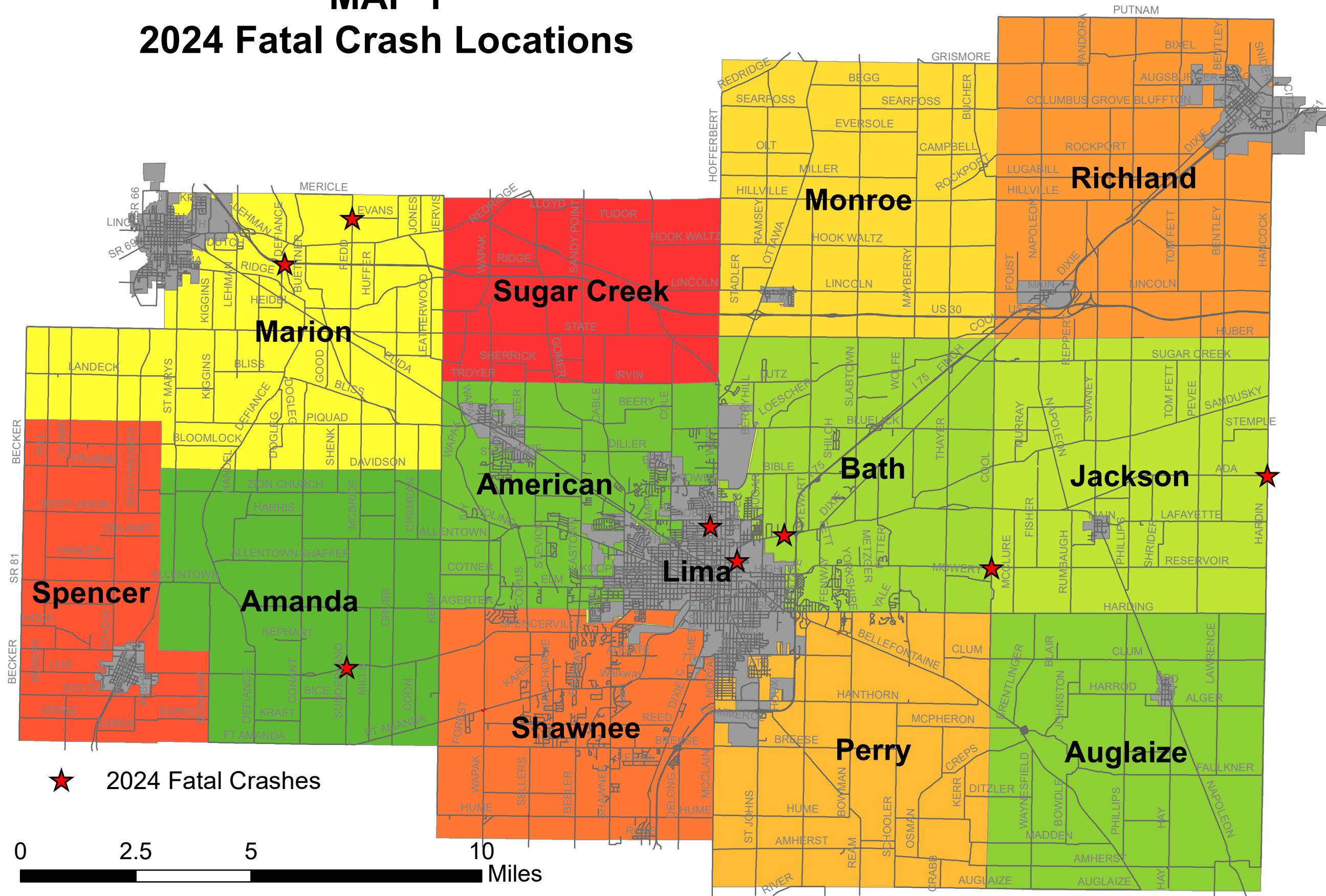
Unit 1 (bicycle) slowed down to a near stop and was struck in the rear by Unit 2. Unit 1 overturned.

Persons Involved: 2 persons involved, 1 fatality

Safety Equipment: Only utilized by the motorist



MAP 1 2024 Fatal Crash Locations





Appendix A:

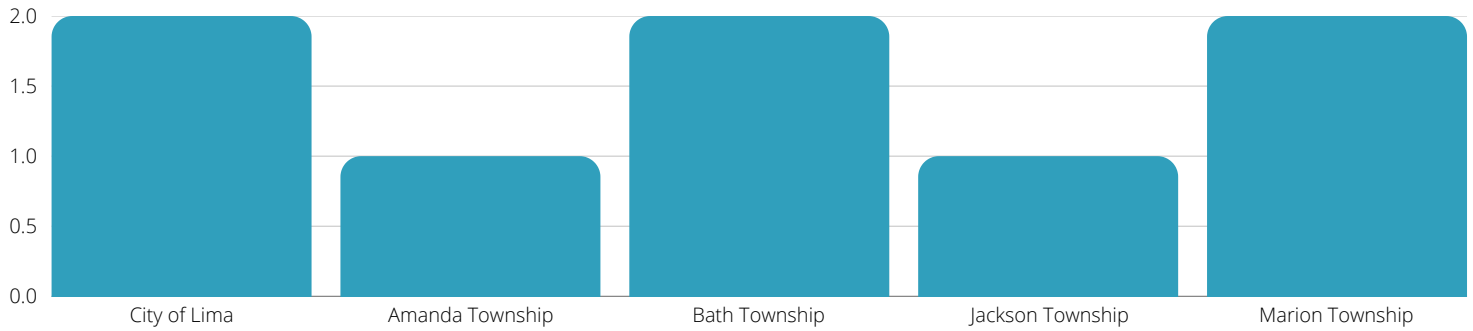
2024 Fatal
Crash Review



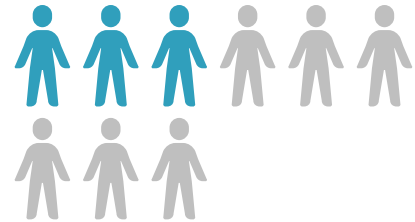
ALLEN COUNTY FATAL CRASHES

2024 FATAL CRASH REVIEW

CRASHES BY LOCATION

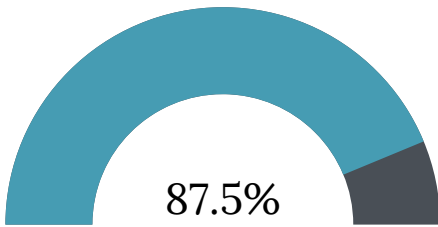


2 OUT OF 8 FATAL CRASHES INVOLVED DRUGS OR ALCOHOL

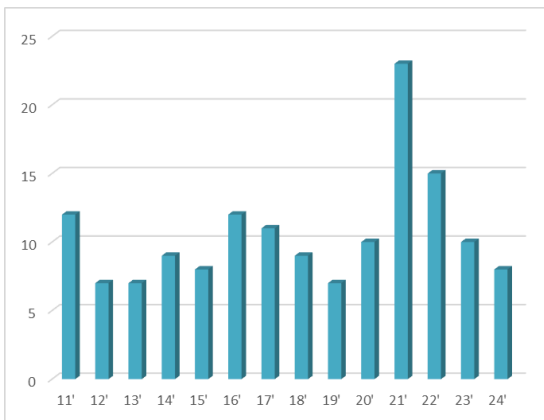


3 OUT OF 9 FATALITIES WERE NOT USING SAFETY EQUIPMENT

CRASHES ON DRY ROADWAYS



- 20% DECREASE IN FATAL CRASHES
- 37.5% OF FATAL CRASHES OCCURED AT NIGHT
- 0% OF FATAL CRASHES INVOLVED MOTORCYCLES
- 25% OF FATAL CRASHES INVOLVED IMPAIRED DRIVERS



FATAL CRASHES OVER TIME
2011-2024



3 OUT OF 8 CRASHES INVOLVE EXCESSIVE SPEED

