



Table of Contents

Table of Contents	i
Introduction	1
Figure 1: 2024 Crash Severity	1
Figure 2: Fatals by Political Subdivision	1
2024 Traffic Crash Overview	2
Figure 3: Fatal Crashes Over Time	2
Safety Based Performance Measures	3
Historical Crash Comparison	4
Figure 4: 2024 Fatal Crashes by Month	4
Figure 5: Age of Drivers	5
Figure 6: Safety Equipment Used	5
Figure 7: Fatal Crashes by Weather	5
2024 Crash Maps	6
Appendix A:	7

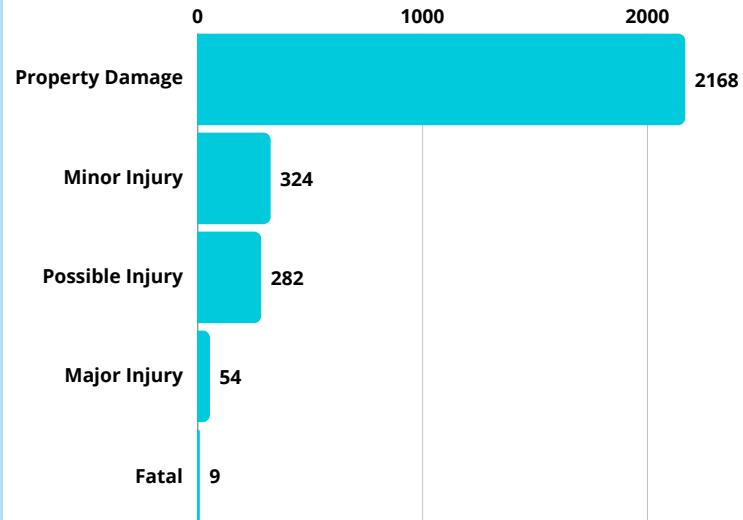
The preparation of this report was financed in part by the Federal Highway Administration (FHWA), the Ohio Department of Transportation (ODOT), the Ohio Department of Public Safety (ODPS), and local units of government. This report does not reflect the official view or policies of the FHWA, ODPS, or ODOT. This report does not constitute a standard specification or regulation. The contents of this report represent the work of the Lima-Allen County Regional Planning Commission (LACRPC). The report does not represent ODOT, ODPS, or the National Highway Traffic Safety Administration (NHTSA) standard or policy. Questions or concerns should be forwarded to the LACRPC at 130 W. North Street, Lima, Ohio 45801 (www.LACRPC.com).



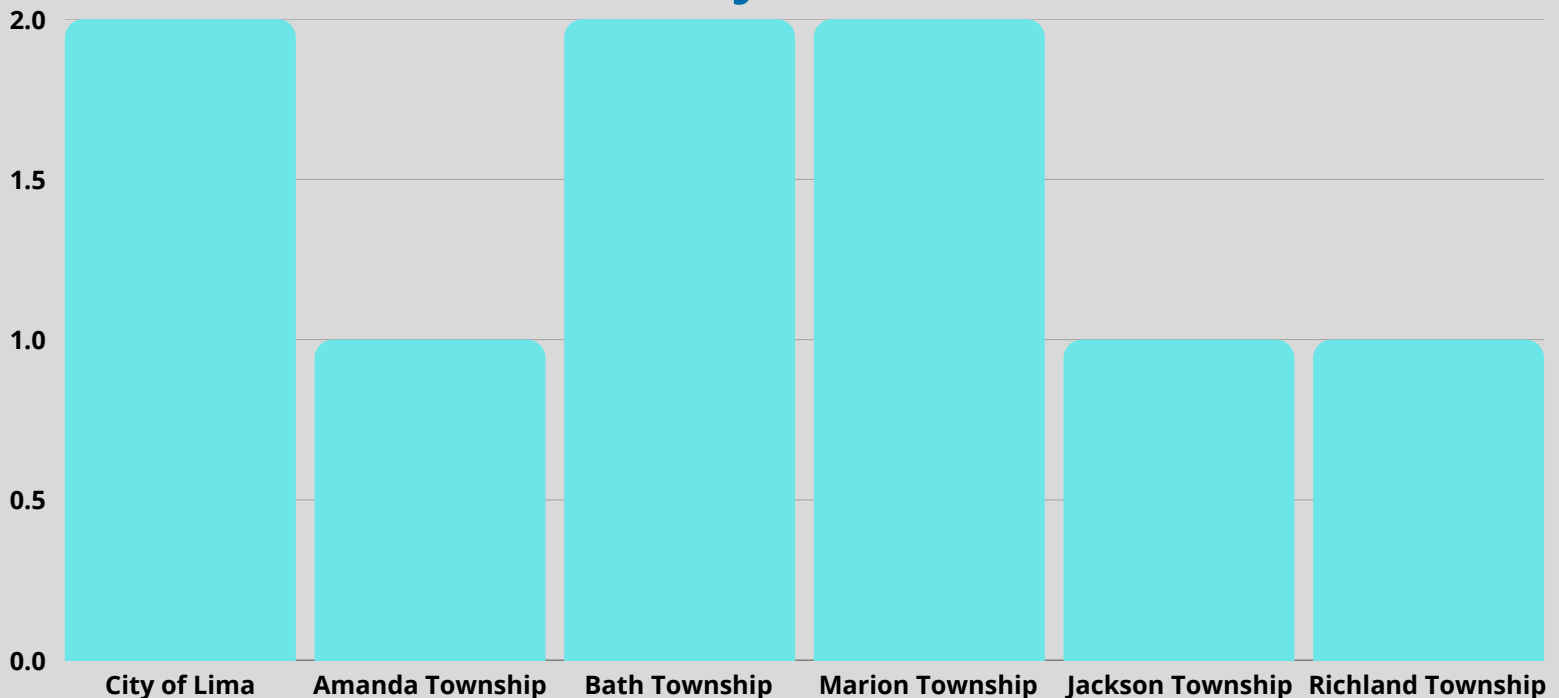
Introduction

The Lima-Allen County Regional Planning Commission (LACRPC) is pleased to present the 2024 Fatal Crash Report for Allen County, Ohio. This report reflects fatal motor vehicle crashes for the calendar year 2024 and intends to provide the reader with a clear summary of the year's fatal crashes. It will attempt to provide our members with sufficient data to make educated decisions while managing traffic. The contents of this report represent the work of the LACRPC. The report does not represent a standard or policy of FHWA, ODOT, ODPS, or the NHTSA. Please forward any questions or concerns to the LACRPC at 130 W. North Street, Lima, Ohio 45801 (www.LACRPC.com). This report presents data across various topics, but if additional data is needed, please do not hesitate to contact LACRPC's office directly at (419) 228-1836.

2024 Crash Severity



Fatal Crashes by Political Subdivision





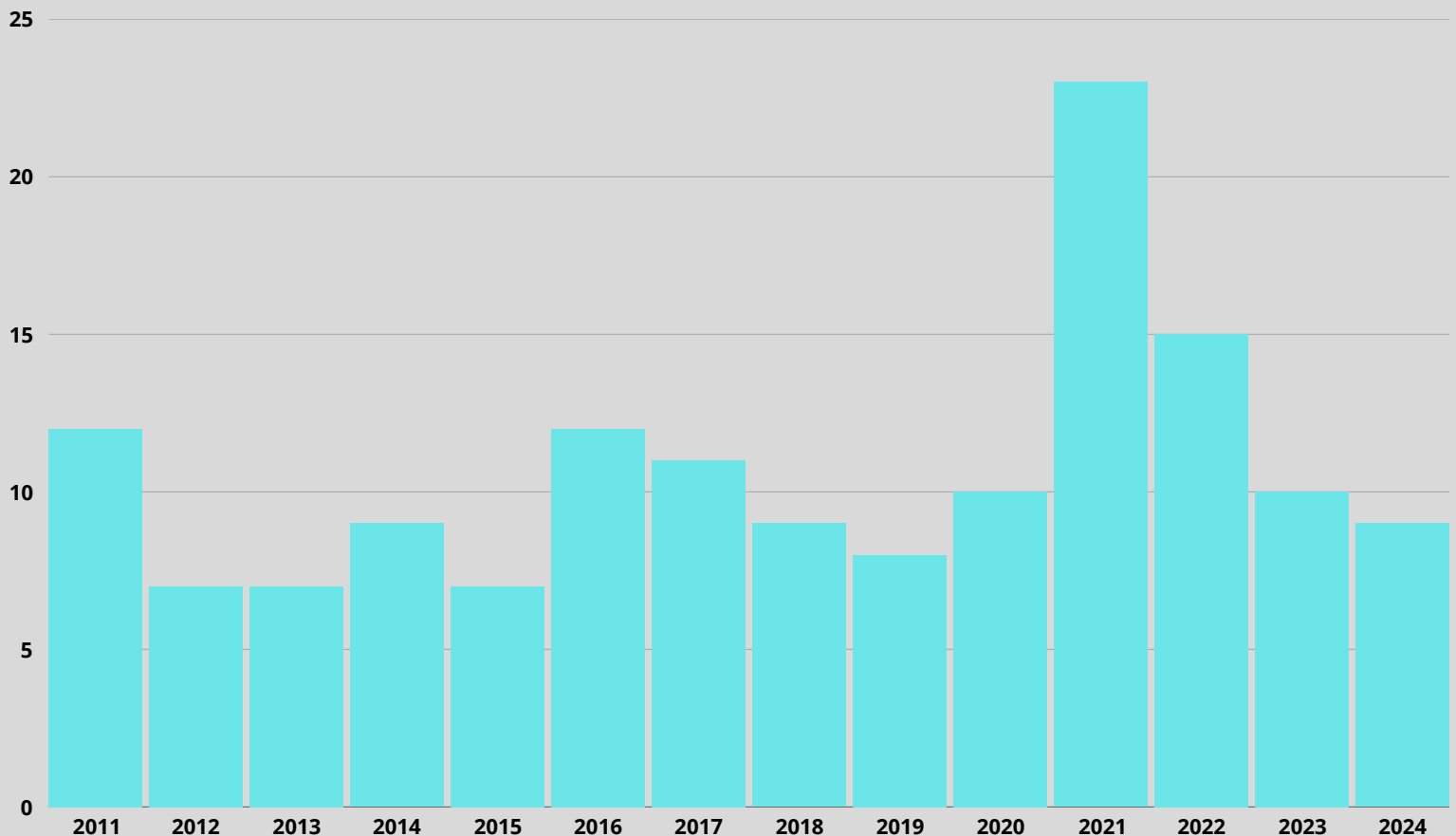
2024 Traffic Crash Overview

A total of 2,838 crashes occurred within LACRPC's planning area in 2024. All crashes provided within the Ohio Department of Transportation's (ODOT) GIS Crash Analysis Tool (GCATS) system were included in this report. There were 9 fatal crashes, 660 involving injuries of varying degrees, and 2,168 resulting in property damage only (see attached statistical sheets). Regarding personal costs, 10 individuals were killed and 951 injured in crashes in 2024.

Allen County did see a reduction in fatalities from the 10-year rolling average of 12 fatalities down to 10. The Performance Measure of 65 Serious Injuries was also accomplished with 54 in 2024. This metric is often forgotten in transportation safety discussions. A serious injury crash is a happenstance away from being a fatality and may be a viable statistic for identifying locations in need of improvement before a fatal occurs.

*Totals are subject to change as end of year crash reports become available.

Fatal Crashes Over Time



Safety Based Performance Measures



	Performance Measure Goal	Number Occured
1	Total Fatalities - 12	10
2	Total Serious Injuries - 65	54
3	Fatal Rate 0.94 /100 MVM	0.78/100 MVM
4	Serious Injury Rate - 5.09/100 MVM	4.23/100 MVM
5	Ped/Non-Motorized Fatal/Serious Injuries - 10	7

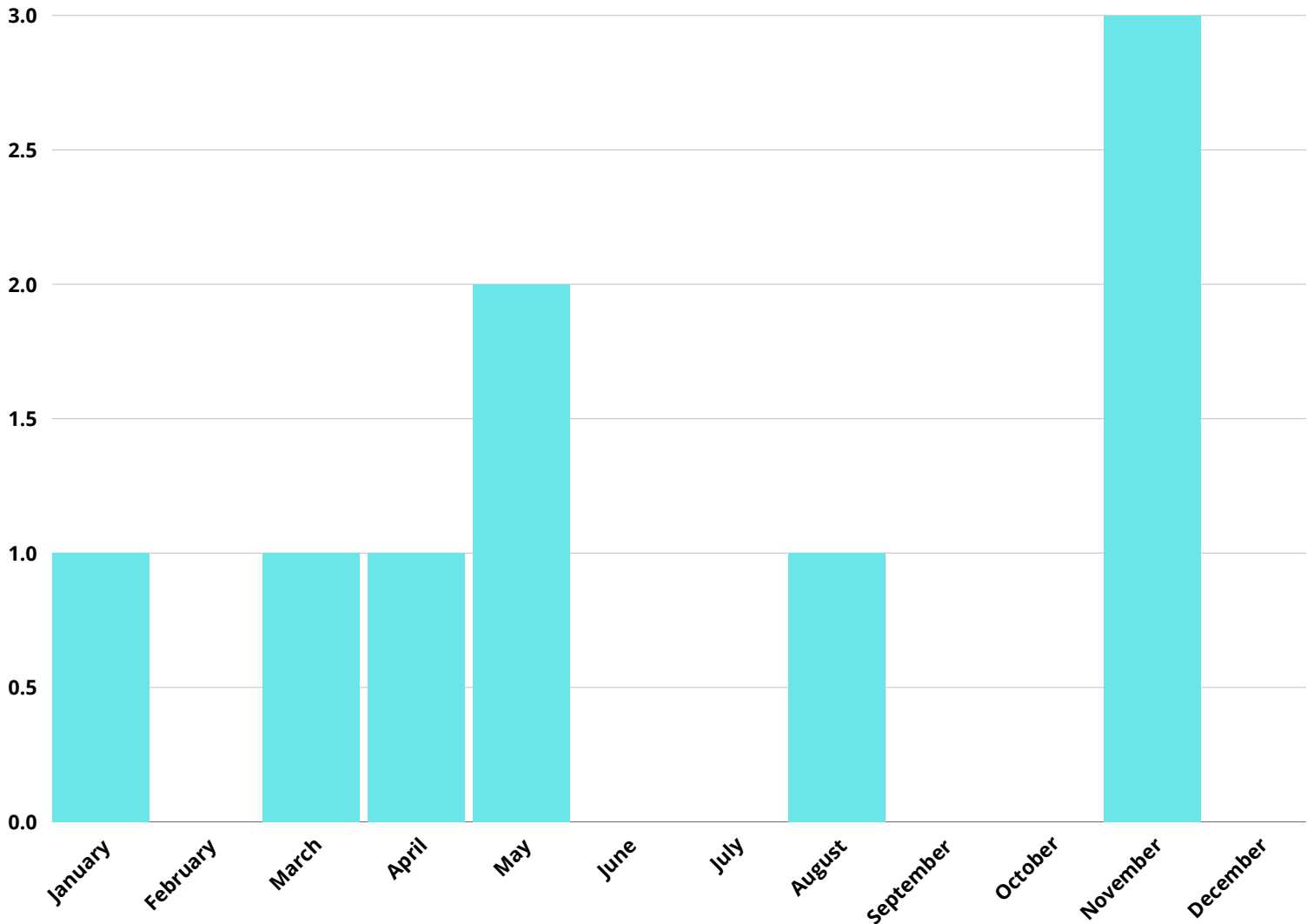
*Totals are subject to change as end of year crash reports become available.

Safety Based Performance Measures

The goal of this report is to improve roadway safety in Allen County for all users. A set of quantitative measurements must be established as a baseline comparison for past and future data to achieve these goals. The FAST Act, established under the Obama Administration, establishes these goals as performance measures. Per the FAST Act standards and concurrence of statewide goals set by ODOT, this MPO committed to a goal of a 2% reduction in CY 2024, using a 5-year rolling average (2019-2023) as a baseline in all five (5) safety metrics. These metrics include the total number of fatalities, the fatality rate per 100 million vehicle miles (MVM), the total number of serious injuries, serious injuries per 100 MVM, and non-motorized fatalities and/or serious injuries. The MPO uses these performance measures to prioritize future improvements and make recommendations to governmental bodies. Please note that other performance measures were established by the FAST Act but are not applicable under the scope of this report.



2024 Fatal Crashes by Month

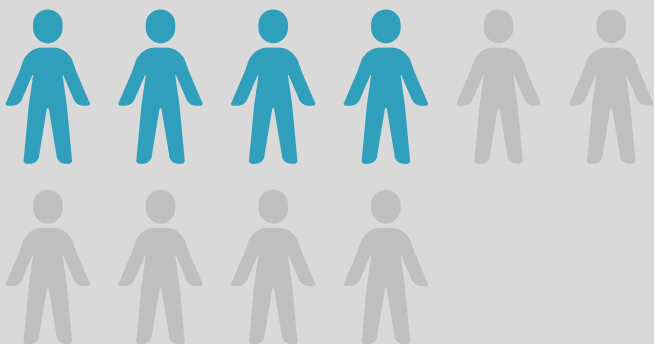
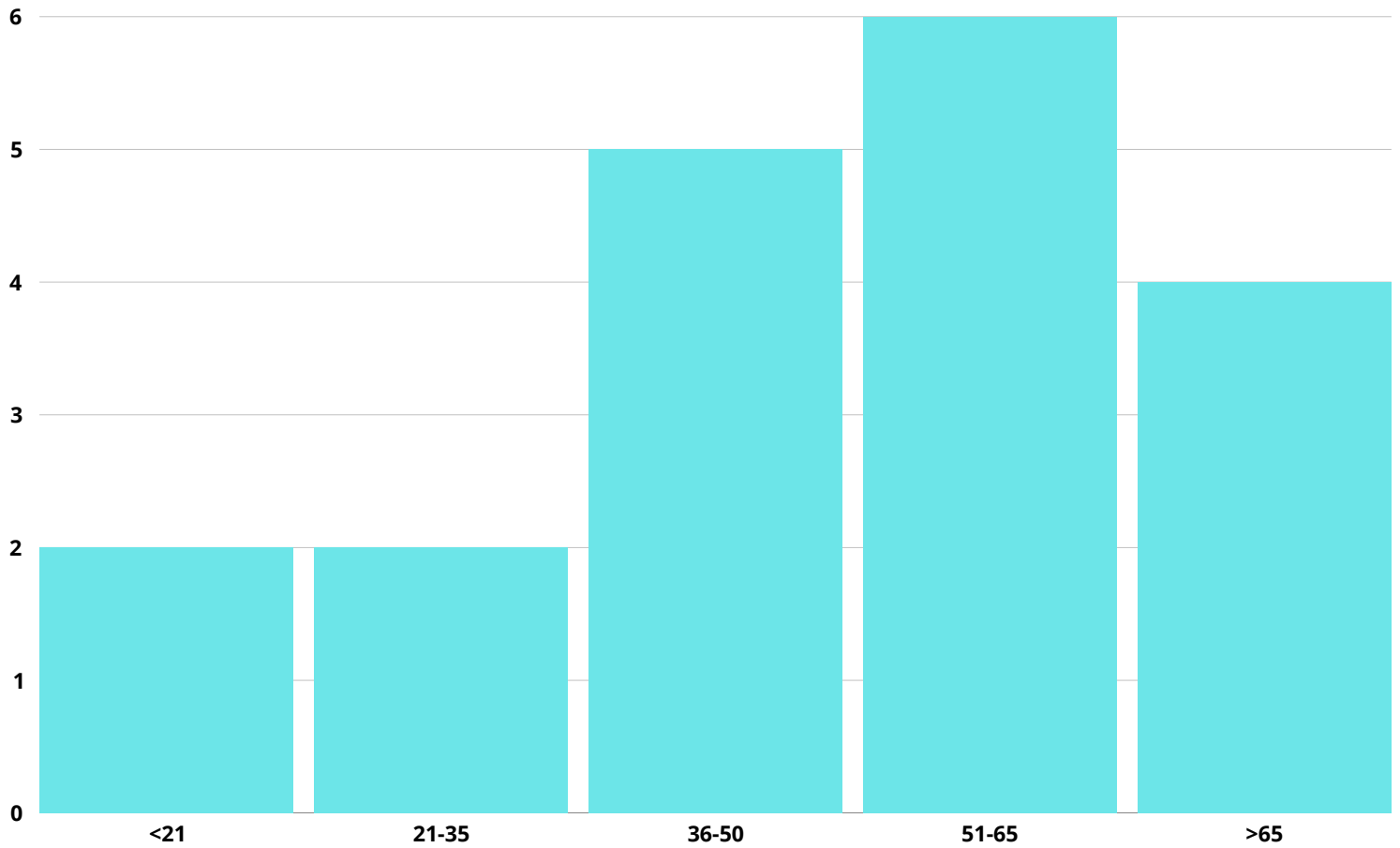


Historical Crash Comparison

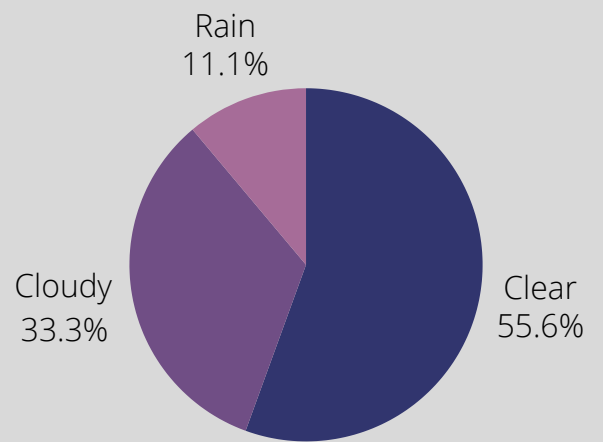
The overwhelming majority of crashes occurred on dry roadways (88.9%) during the day (55.6%). Fatal crashes seem to correspond near peak volumes 4:00 p.m. to 5:00 p.m. (3); and 6:00 a.m. and 10:00 a.m. (3). November and May each saw three and two fatal crashes respectively. Drawing inferences from any statistic is less than ideal with such a limited sample size. Even year to year fatalities will vary and, while the hope is that transportation safety is improving, it cannot be surmised on a year-to-year basis.



Age of Drivers Involved In Fatal Crashes



4 OUT OF 10 FATALITIES WERE NOT USING SAFETY EQUIPMENT



FATAL CRASHES BY WEATHER CONDITION



2024 Fatal Crash Maps

Crash 1	I
Crash 2	II
Crash 3	III
Crash 4	IV
Crash 5	V
Crash 6	VI
Crash 7	VII
Crash 8	VIII
Crash 9	IX
Fatal Crash Locations	X

Map 1

2024 Fatal Crash #1:

State Route 81 and Neubrecht Rd.;

Bath Township



Crash Facts:

Date and Time: 01/28/2024 @ 5:52 A.M.

Conditions: Dark lighted roadway, wet, rain.

Vehicle Description: 1 Units (1 Passenger Car, 1 Pedestrian).

Crash Type and Description: Unit 1 was southwest on S.R. 81 in the right lane. Unit 2 was injured, laying in the right lane of S.R. 81, as a result of a previous traffic crash. Unit 1 struck unit 2.

Persons involved and Fatalities: 2 Persons involved; 1 fatality.

Safety Equipment: Utilized by Driver of Vehicle.



*Location approximate, based on officer GPS location.

Map 2

2024 Fatal Crash #2:

400 Block W. O'Connor Ave., City of Lima



Crash Facts:

Date and Time: 03/29/2024 @ 2:33 A.M.

Conditions: Dark lighted roadway, Dry, Clear.

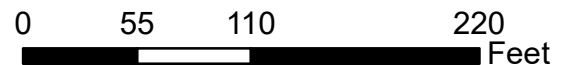
Vehicle Description: 2 Units (1 SUV, 1 Passenger Car).

Crash Type and Description: Unit 1 was legally parked facing westbound.

Unit 2 was traveling eastbound and struck Unit 1. Both vehicles were disabled in the crash, and the driver of Unit 2 was transported off the scene for life threatening injuries.

Persons involved and Fatalities: 1 Person involved; 1 fatality.

Safety Equipment: None.

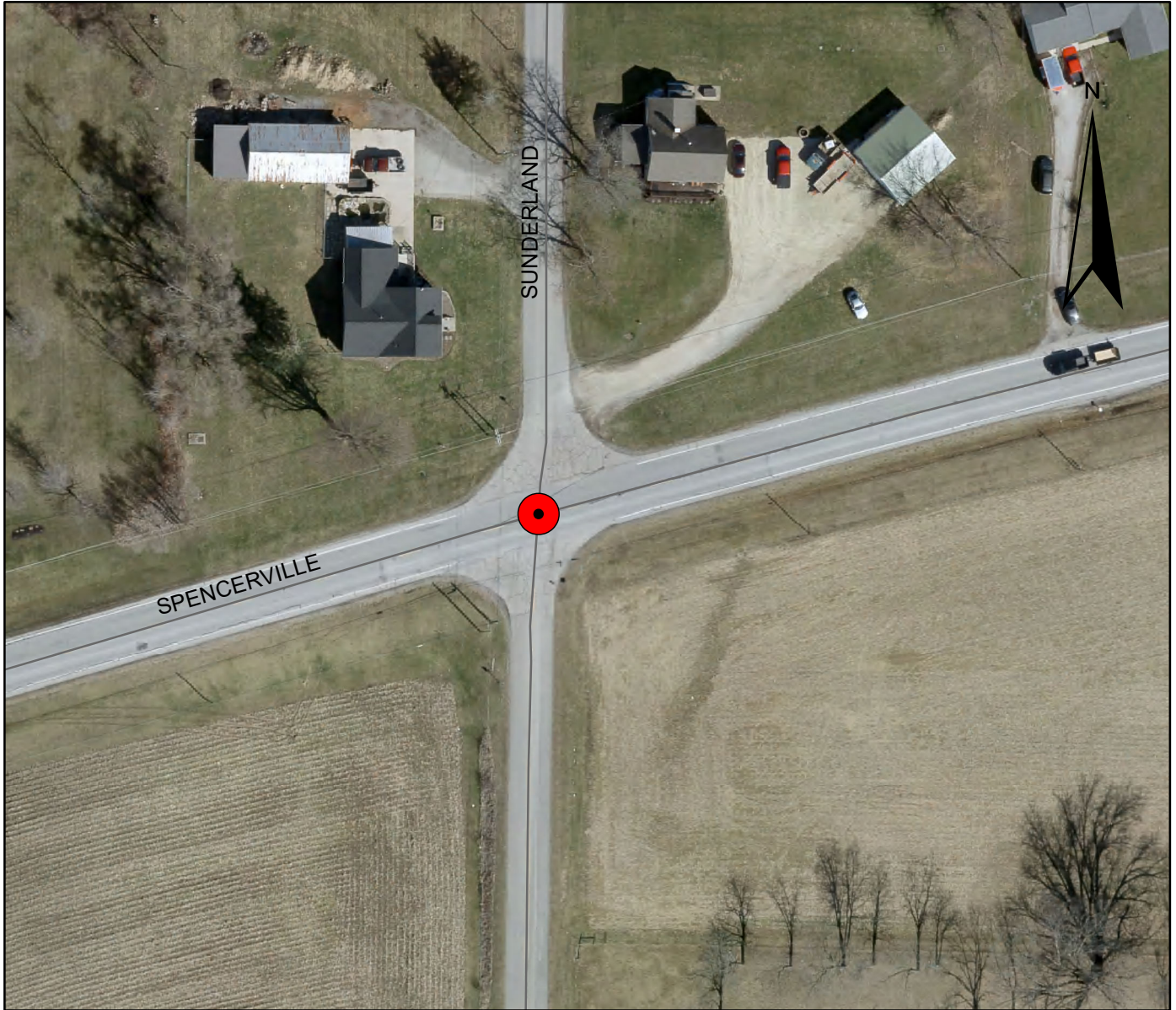


*Location approximate, based on officer GPS location.

Map 3

2024 Fatal Crash #3:

Intersection of S.R. 117 and Sunderland Rd., Amanda Township



Crash Facts:

Date and Time: 04/17/2024 @ 9:30 A.M.

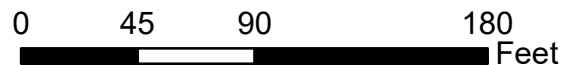
Conditions: Dawn, cloudy, dry roadways.

Vehicle Description: 3 Units (1 SUV, demi tractor, and 1 Passenger Car).

Crash Type and Description: Unit 1 was traveling northbound on Sunderland Rd. Unit 1 failed to stop and struck Unit 2, who was traveling southwest on S.R. 117. Unit 1 then spun out and was struck by Unit 3 who was traveling northeast on S.R. 117. Unit 1 then overturned, went off the south side of the roadway, and came to a stop. Unit 3 also left the south side of the roadway.

Persons Involved and Fatalities: 3 Person involved; 1 fatality.

Safety Equipment: Lap and shoulder belt utilized by units 2 and 3, no safety equipment utilized by Unit 1.



*Location approximate, based on officer GPS location.

Map 4

2024 Fatal Crash #4:

Intersection of Defiance Trail and U.S. 30., Marion Township



Crash Facts:

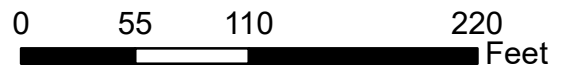
Date and Time: 05/03/2024 @ 5:47 P.M.

Conditions: Daylight, clear, dry roadways.

Vehicle Description: 2 Units (2 Passenger Cars).

Crash Type and Description: Unit 2 was traveling east on U.S. 30 while unit 1 was traveling south on Defiance Trail. Unit 1 stopped at the stop sign at the intersection of U.S. 30, the continued south into the roadway. Unit 1 then stopped into the median, and again continued south. Unit 2 struck unit 1. Unit 1 then crossed the center line, went off the roadway, and came to rest in a ditch.

Safety Equipment: Used only by the occupants of unit 1 (fatality occurred within unit 2).



Map 5

2024 Fatal Crash #5: Redd Road., Marion Township



Crash Facts:

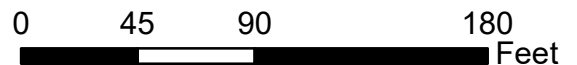
Date and Time: 05/20/2024 @ 10:08 A.M.

Conditions: Daylight, clear, dry roadways.

Vehicle Description: Unit 1 was southbound on Redd Road and drove off the right side of the roadway. Unit 1 then overcorrected, crossed the centerline and drove off the left side of the road.

Unit 1 then overturned and came to a rest. Driver of unit 1 passed away on 6-6-2024

Safety Equipment: Unknown



Map 6

2024 Fatal Crash #6:

Intersection of E. McKibben St. and N. Jackson St., City of Lima



Crash Facts:

Date and Time: 08/14/2024 @ 4:45 P.M.

Conditions: Daylight, clear, dry roadways.

Vehicle Description: 3 Units; 1 passenger car 2 SUVs

Crash Description: Unit 1 was northbound on Jackson St.

Near McKibben St and unit 2 was traveling southbound on Jackson near McKibben St. Unit 3 was westbound on McKibben; at a speed in excess of 70MPH. Unit 3 became air borne when driving over the railroad crossing; ran the stop sign at McKibben; and struck the passenger side of Unit 2. Unit 2 was forced into Unit 1 before leaving the roadway. Units 2 and 3 came to rest off of the roadway. The operators of unit 2 and 3 sustained major injuries and were transported to local medical centers.

Persons Involved: 4 persons involved, 1 fatality.

Safety Equipment: Utilized by operator and occupant of Unit 1



Map 7

2024 Fatal Crash #7:

Interstate 75, Richalnd Township



Crash Facts:

Date and Time: 11/10/2024 @ 8:28 P.M.

Conditions: Dark lighted roadway, clear, dry roadway

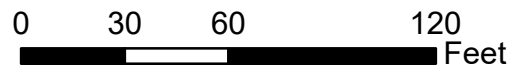
Vehicle Description: 1 Unit; 1 passenger car

Crash Description: Unit 1 was traveling northeast on I-75.

While negotiating a left curve, Unit 1 drove off the side of the road and struck a concrete bridge support.

Persons Involved: 1 person involved, 1 fatality.

Safety Equipment: None used



Map 8

2024 Fatal Crash #8:

Intersection of N. Hardin Rd. and S.R. 81, Jackson Township



Crash Facts:

Date and Time: 11/12/2024 @ 4:40 P.M.

Conditions: Daylight, clear, dry roadway

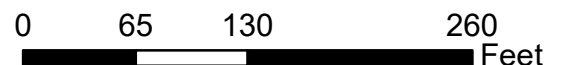
Vehicle Description: 3 Units; 2 SUVs and 1 Pickup Truck

Crash Description: Unit 1 was traveling south on N. Hardin Road.

Unit 2 was traveling southwest on S.R. 81, and Unit 3 was traveling northeast on S.R. 81. Unit 1 ran the stop sign and was struck by Unit 2 and then struck Unit 3. Unit 1 traveled off the right side of the roadway. Unit 3 traveled off the right side of the roadway and overturned.

Persons Involved: 4 persons involved, 2 fatalities

Safety Equipment: Used by all



Map 9

2024 Fatal Crash #9: Reservoir Road, Bath Township



Crash Facts:

Date and Time: 11/26/2024 @ 6:46 A.M.

Conditions: Dark, cloudy, dry roadway

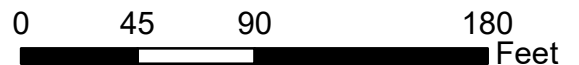
Vehicle Description: 2 Units; 1 Bicycle and 1 Pickup Truck

Crash Description: Both Units were traveling west on Reservoir Road.

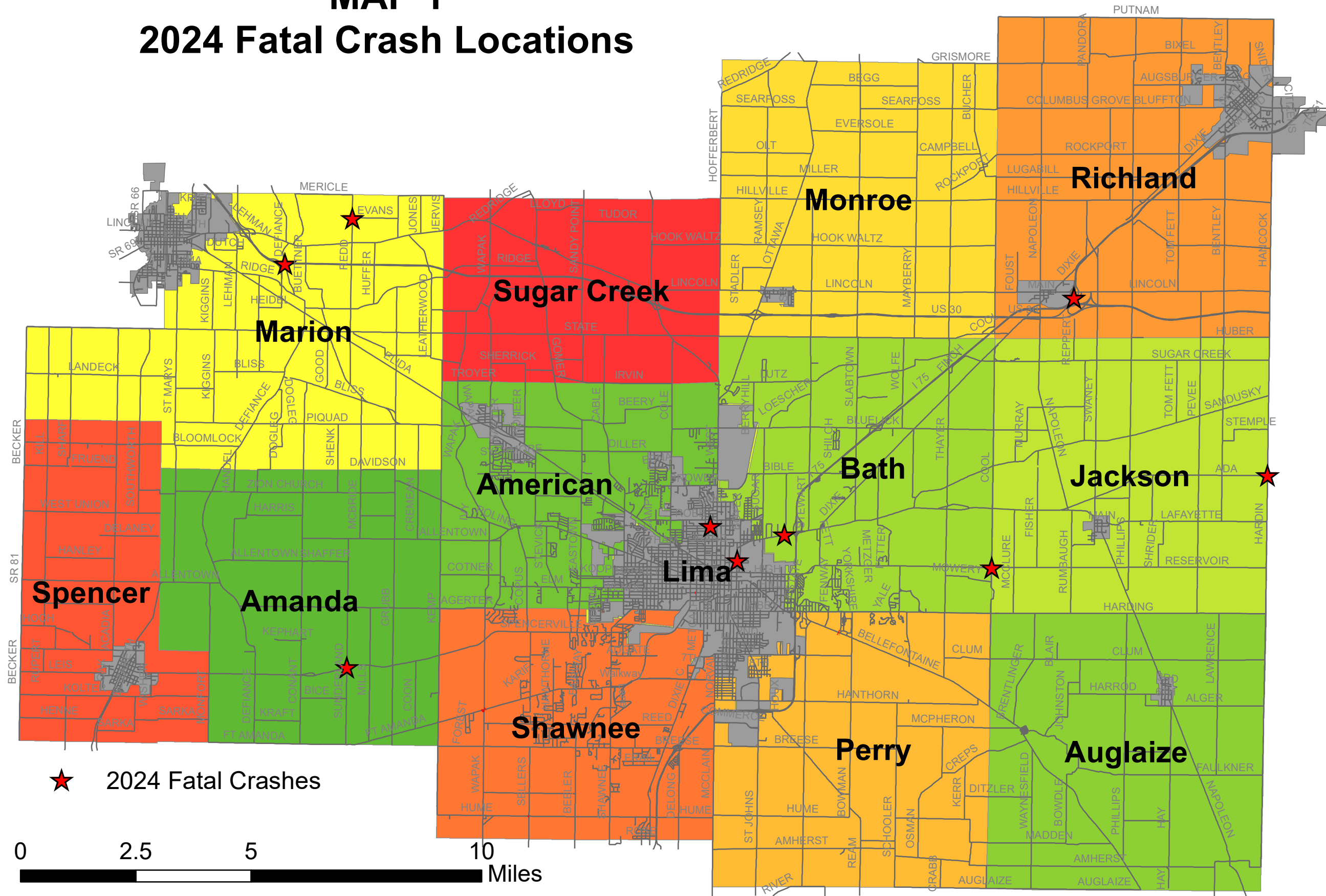
Unit 1 (bicycle) slowed down to a near stop and was struck in the rear by unit 2. Unit 1 overturned.

Persons Involved: 2 persons involved, 1 fatality

Safety Equipment: Only utilized by the motorist



MAP 1 2024 Fatal Crash Locations





Appendix A:

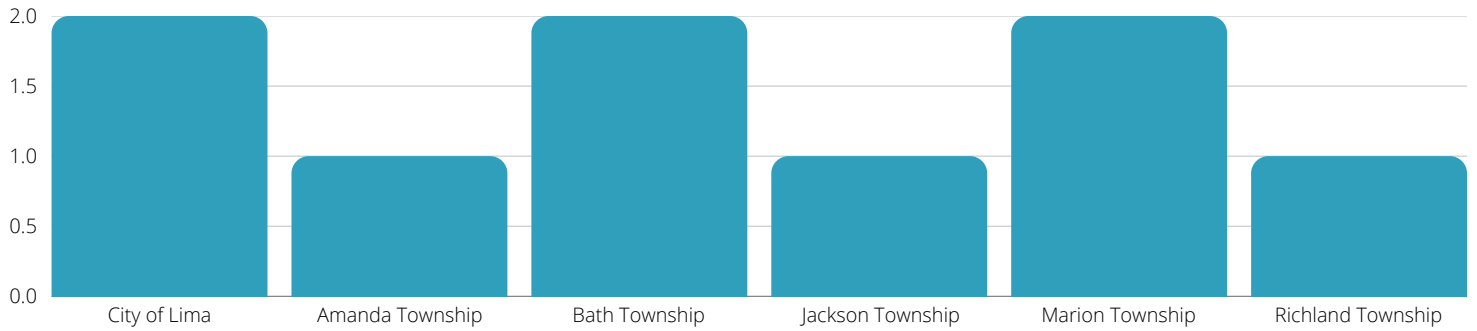
2024 Fatal
Crash Review



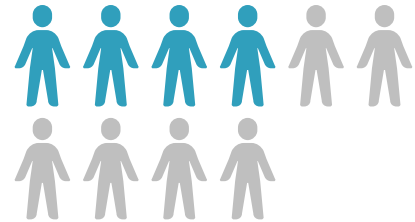
ALLEN COUNTY FATAL CRASHES

2024 FATAL CRASH REVIEW

CRASHES BY LOCATION

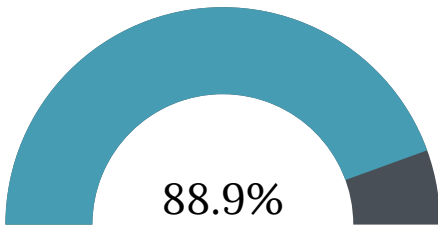


3 OUT OF 9 FATAL CRASHES INVOLVED DRUGS OR ALCOHOL

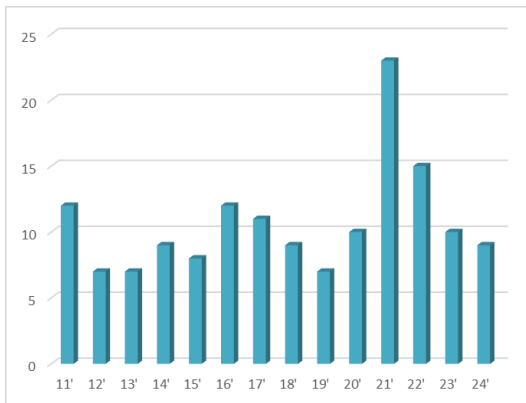


4 OUT OF 10 FATALITIES WERE NOT USING SAFETY EQUIPMENT

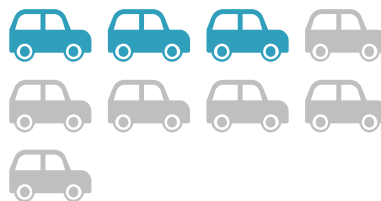
CRASHES ON DRY ROADWAYS



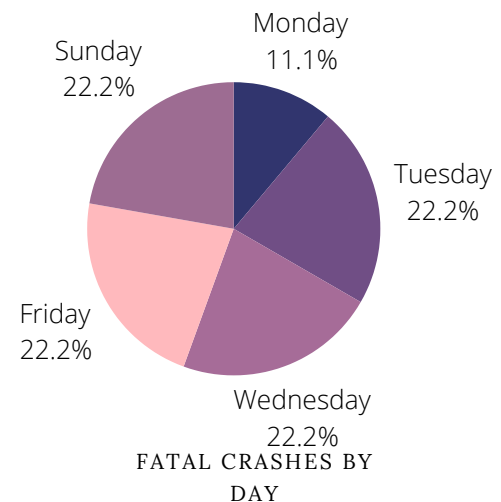
- 10% DECREASE IN FATAL CRASHES
- 44.4% OF FATAL CRASHES OCCURED AT NIGHT
- 0% OF FATAL CRASHES INVOLVED MOTORCYCLES
- 33.3% OF FATAL CRASHES INVOLVED IMPAIRED DRIVERS



FATAL CRASHES OVER TIME
2011-2024



3 OUT OF 9 CRASHES INVOLVE EXCESSIVE SPEED



Public Participation Documentation

Fatal Crash Report – 2024

Path/Project	Public Participation/ Engagement	Feedback/Comments	Results of Public Participation
Fatal Crash Report 2024	Some details of Fatal Crash Report 2024 DRAFT were presented to the Safety Review Team that met at LACRPC on Jan. 10.	Group discussed one fatality under investigation.	On Feb. 18, 2025, LACRPC was informed by the Allen County Coroner that the fatality in question was later ruled “undetermined” cause of death by coroner. Will be added into report to reflect 10 crash fatalities instead of 9 by Jeff Anspach at Ohio Department of Public Safety.
	Hard copy of Fatal Crash Report 2024 DRAFT made available at LACRPC’s office lobby.	No feedback submitted	No changes needed due to no public comment/inquiry
	Fatal Crash Report 2024 DRAFT and public comment form posted on Feb. 7 at www.lacrpc.com from Jan. 24-Feb. 14, 2025	1 like on Facebook	No changes needed due to no public comment/inquiry
	Fatal Crash Report 2024 DRAFT and public comment form posted on LACRPC’s Facebook page on Feb. 7, 2025	No feedback submitted	No changes needed due to no public comment/inquiry
	Press conference held on Feb. 6 at LACRPC to discuss Fatal Crash Report 2024 DRAFT, as well as safe driving initiatives. Speakers were Adam Haunhorst, Planning Engineer at LACRPC, Sgt. Justin Powell of Ohio State Hwy Patrol – Lima Post, and Dr. John Meyer, Allen County Coroner. Invited Hometown Stations/WLIO, The Lima News, and Woof Boom Radio. WLIO and The Lima News attended and covered the Fatal Crash Report.	2 likes on Facebook	No changes needed due to no public comment/inquiry
	Coverage from Press conference was linked to LACRPC’s Facebook page and website on Feb. 7.	4 likes on Facebook	No changes needed due to no public comment/inquiry



Lima-Allen County Regional Planning Commission

Feb 7 · [public]

2024 Fatal Crash Report - DRAFT - now open for review and public comment until Friday, Feb. 14. <https://www.lacrpc.com/wp-content/uploads/2025/02/2024-Fatal-Crash-Combined-Report.pdf>

ALLEN COUNTY FATAL CRASHES

2024 FATAL CRASH REVIEW



3:43



< Lima-Allen County R... 9+ ▾ ✎ 🔍

Posts About Photos More ▾



Lima-Allen County Regional Planning Commission



Feb 7 · 🌐

Great coverage from [Your Hometown Stations - Lima Ohio](#) about the 2024 Fatal Crash Report DRAFT and the need to drive sober this Super Bowl Sunday! Thank you!



hometownstations.com

Allen County sees decline in fatal crashes, but officials urge continued caution

[See insights and ads](#)

Boost post



1 comment

👍 Like 💬 Comment 🔗 Copy ➦ Share



Lima-Allen County Regional Planning



3:42



< Lima-Allen County R... 9+ ▾ ✎ 🔍

Posts About Photos More ▾

 **Lima-Allen County Regional Planning Commission** ...
Feb 7 · 🌐

Please check out this excellent coverage from [The Lima News](#) about the 2024 Fatal Crash Report DRAFT and the need to drive sober this Super Bowl Sunday! Thank you!



limaohio.com
Road fatality stats shared ahead of Super Bowl weekend

See insights and ads

Boost post

👍 1

1 comment

👍 Like 💬 Comment 🔗 Copy ➦ Share

 **Lima-Allen County Regional Planning Commission** ...
Feb 7 · 🌐



The Lima News: Feb. 6, 2025

Road fatality stats shared ahead of Super Bowl weekend

By [Jacob Espinosa](#) - February 6, 2025



Ohio State Highway Patrol Sgt. Justin Powell spoke at a regional planning commission press conference Thursday morning.

Jacob Espinosa | *The Lima News*

LIMA — Allen County saw eight fatal crashes in 2024, according to the regional planning commission's draft of its fatal crash report.

The commission, with the Ohio State Highway Patrol and the Allen County Coroner's Office, held a press conference Thursday morning to present this information ahead of Super Bowl Sunday.

"2024 was a fairly safe year, not the safest by far, but in terms of fatalities, it was a good year," Ohio State Highway Patrol Sgt. Justin Powell said. "Over the last year, we did see an increase in crashes with mature drivers, so we talked a bit about making that decision to maybe not drive at night as you age. There might be a point where you have to decide it's not safe for you to

drive because you don't want something bad to happen or if you have to help a family member in that same situation so they're safe."

Lima-Allen County Regional Planning Commission planning engineer Adam Haunhorst drafted the report and said the vast majority of crashes occur on dry roads during the day.

"Of all those, three people who died were not wearing their safety equipment," he said. "Two of them involved alcohol and drugs, so those are the important things we like to emphasize every year. There isn't always a pattern, so we all need to be doing our part all the time."

Haunhorst said this can happen because drivers are lulled into a false sense of security, unlike when conditions are as severe as Thursday's icy, wet roads.

Powell stressed the importance of wearing safety belts.

"When you're in a rollover crash and you're not wearing a safety belt, it's completely rolling the dice," he said. "You could be ejected from the vehicle, and it could roll on top of you. That's a crash you would have probably walked away from otherwise, so we want everyone to be safe all the time on the roadway."

Ahead of a weekend in which many people are hosting parties around a football game, Powell advised residents to make a plan ahead of time to avoid driving under the influence.

"You do need to be sober to drive, and .08 is a fairly low number, especially if you have a lower body weight," he said. "If you're going to a party and you're going to be drinking and/or using marijuana, you need to have a plan for how you're going to get home. Have a designated driver set up or someone you can call to get a ride home, or even spend the night where you are. If you see somebody that's about to drive, if you care about them, step in and keep them from making a big mistake."

The Ohio Divisions of Liquor and Cannabis Control sent out a reminder along those lines, advising party attendees to plan ahead, stay hydrated and nourished and follow the rules.

Among the nine fatalities from the crashes, one was recorded as a pedestrian, seven as motorists and one as a bicyclist.

The county compared favorably to the national average in data crashes involving impaired driving and lack of safety belt but was above the national average of fatal crashes involving speeding.

For more information and to provide comment on the report, visit bit.ly/4g8bA6L.

Reach Jacob Espinosa at 567-242-0399.

Allen County sees decline in fatal crashes, but officials urge continued caution

Todd Cummins Feb 6, 2025 Updated Feb 8, 2025



LIMA, OH (WLIO) - While one fatal crash is too many, Allen County officials have seen some positive results from last year's crash numbers, but they emphasize that there is always room for improvement.

In 2024, Allen County recorded eight fatal crashes, resulting in the deaths of nine people—the lowest number since 2019. While local officials hope to continue that trend, the first month of 2025 has already seen a concerning number of fatal crashes.

“The goal is always zero. We don't want to see a single person die on the roads, but we do have some natural fluctuations here in Allen County, statewide for that matter. Last year, we had nine fatalities, eight crashes. This year we've experienced a number that's

a little high for that. We're hoping that that tails off and that it doesn't, but we can all do our part to keep the road safer with our personal choices,” said Adam Haunhorst, planning engineer at the Lima-Allen County Regional Planning Commission.

Three of the nine people killed in crashes last year were not wearing seat belts. Allen County Coroner Dr. John Meyer stressed that simply buckling up could save lives and prevent serious injuries.

“You know sometimes, the safety devices in the car, like the airbags, don't always deploy the way that they're supposed to. You should never count on those to be the exclusive things to save your life. I mean, you have multiple safety devices in your car to help save your life. Keeping your seat belt on prevents you from hitting the windshield, and we see a lot of traumatic brain injuries because of lack of wearing seat belts,” said Meyer.